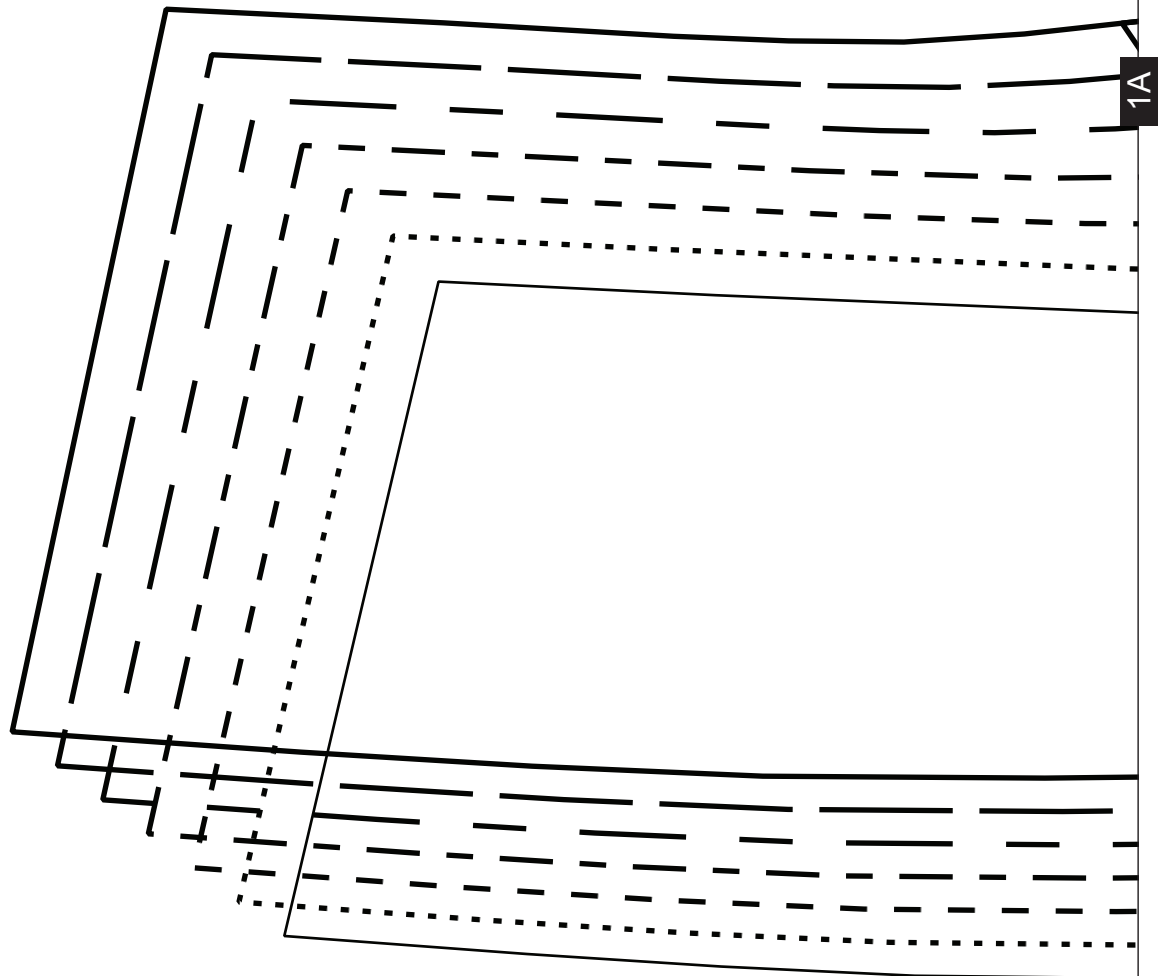
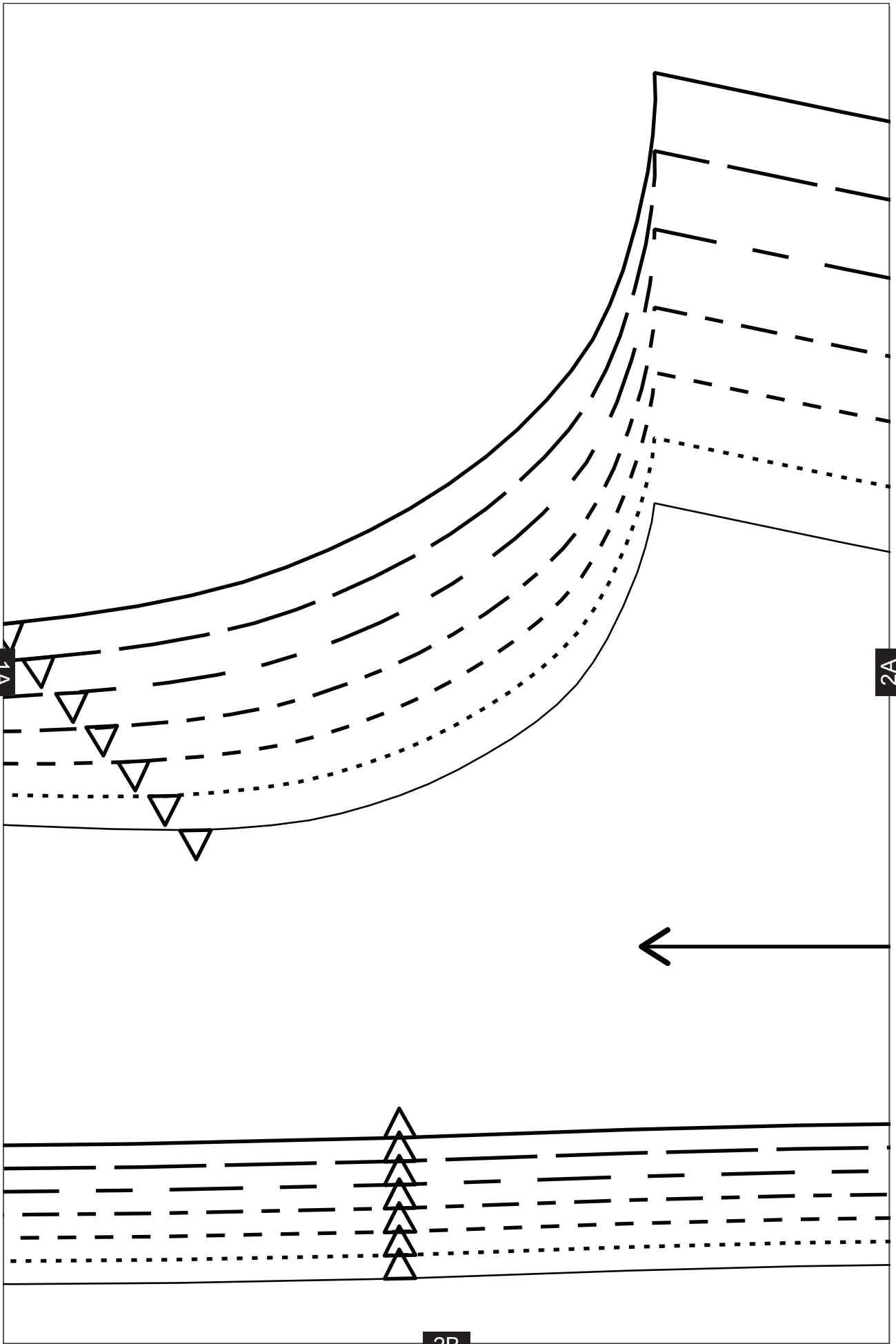
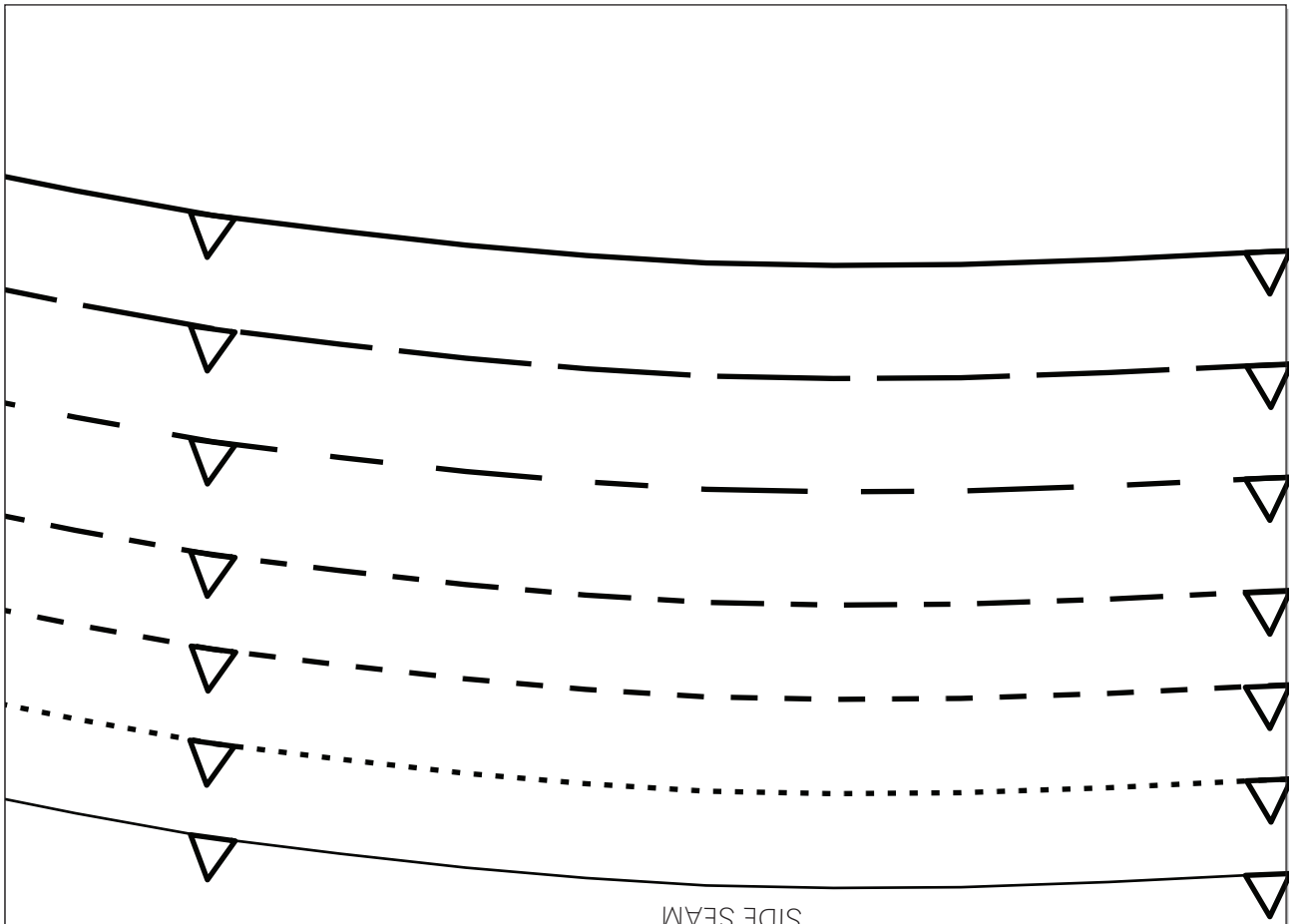


Tweed and Faux Leather Jacket  
Project design © Love Productions 2015  
This design is protected by copyright and  
must not be made for resale.



1B



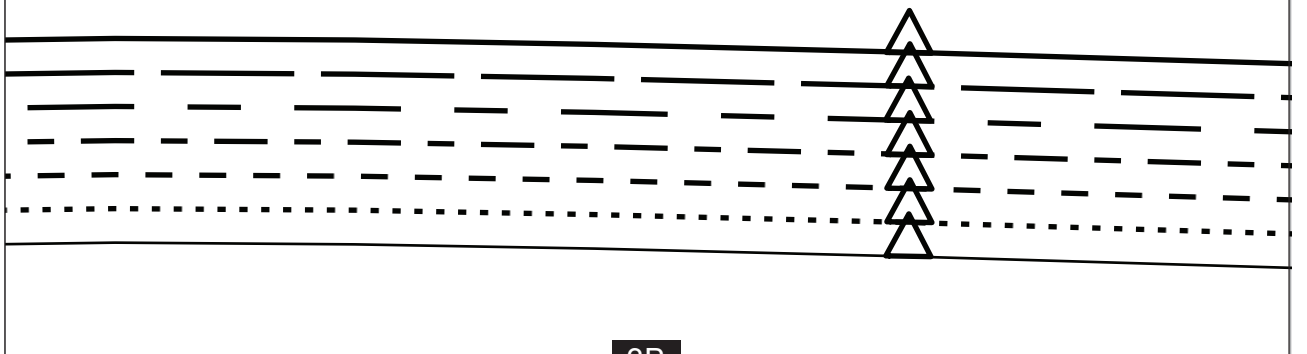


2A

3A

**LEATHER AND TWEED JACKET**  
 SIDE BACK LINING - CUT 2 IN LINING

1-CM (3/8-IN) SEAM ALLOWANCE INCLUDED



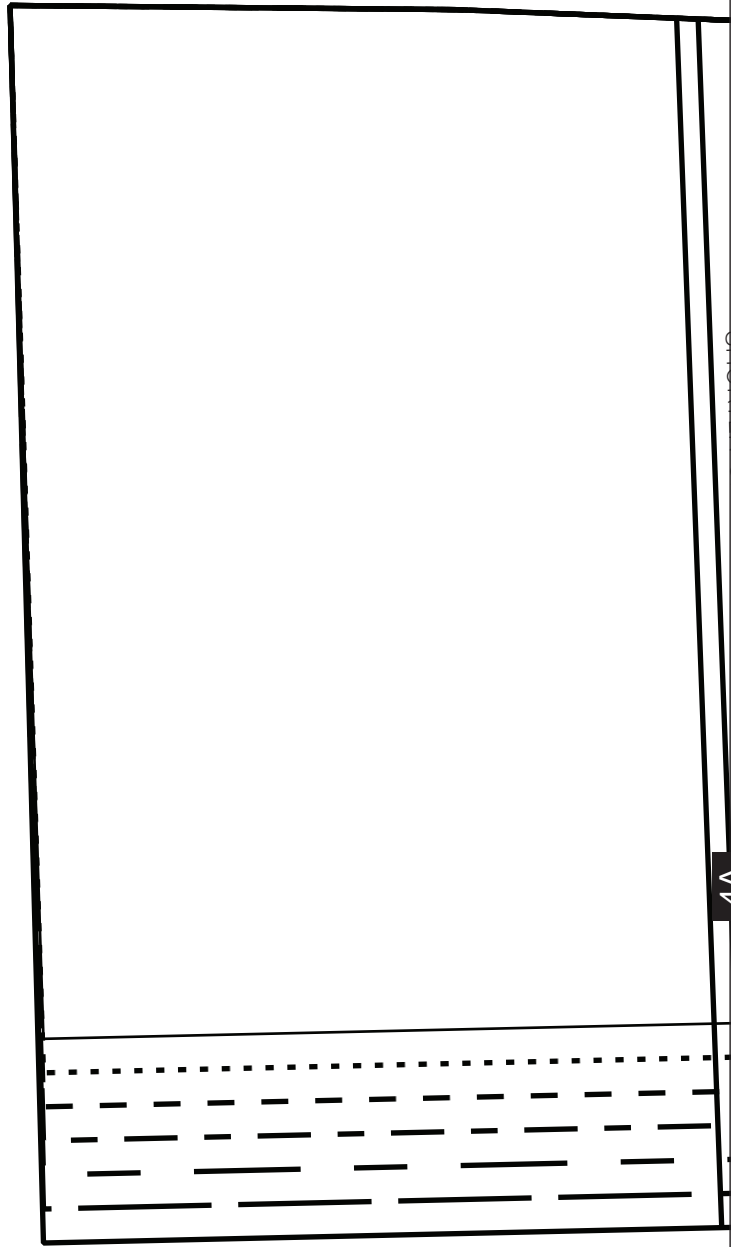
3B

3A

SHORTEN OR LENGTHEN HERE



4A



4B

CENTRE BACK

← 1-CM (3/8-IN) SEAM ALLOWANCE INCLUDED

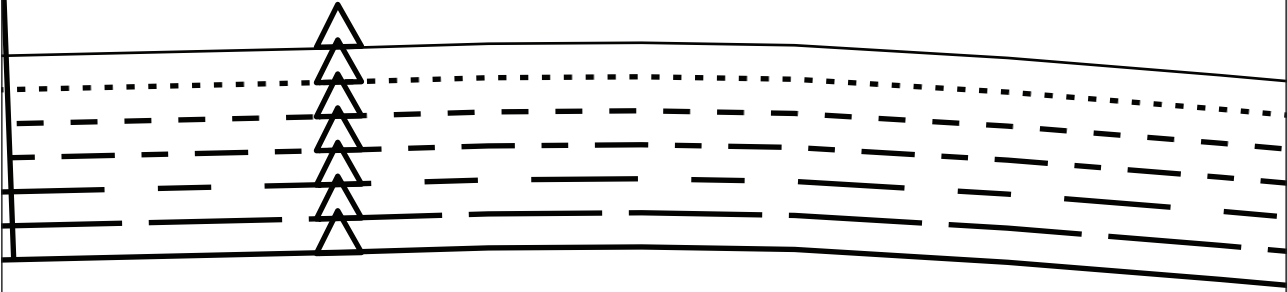
SHORTEN OR LENGTHEN HERE

# LEATHER AND TWEED JACKET

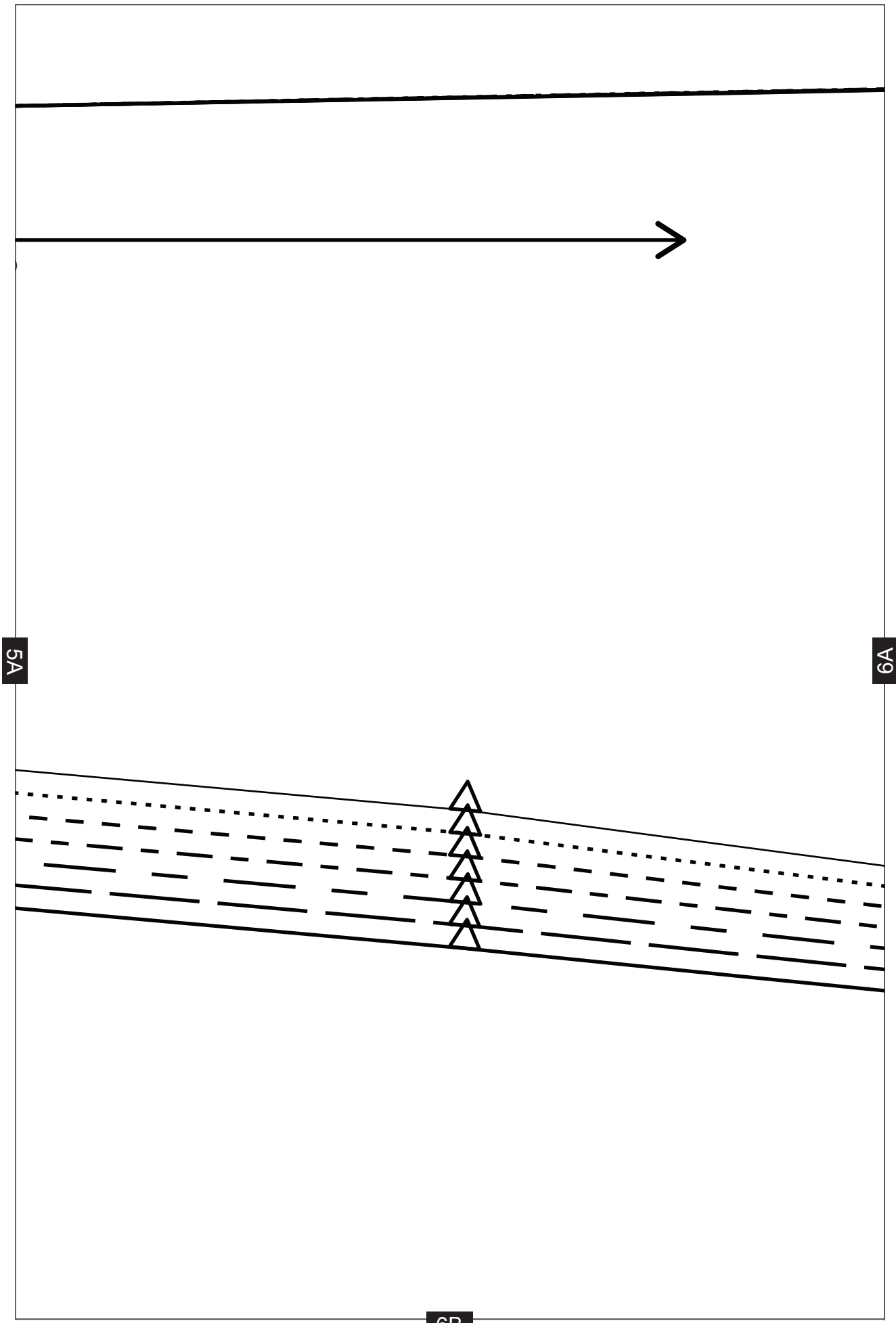
CENTRE BACK – CUT 2 IN LEATHER OR FABRIC

4A

5A



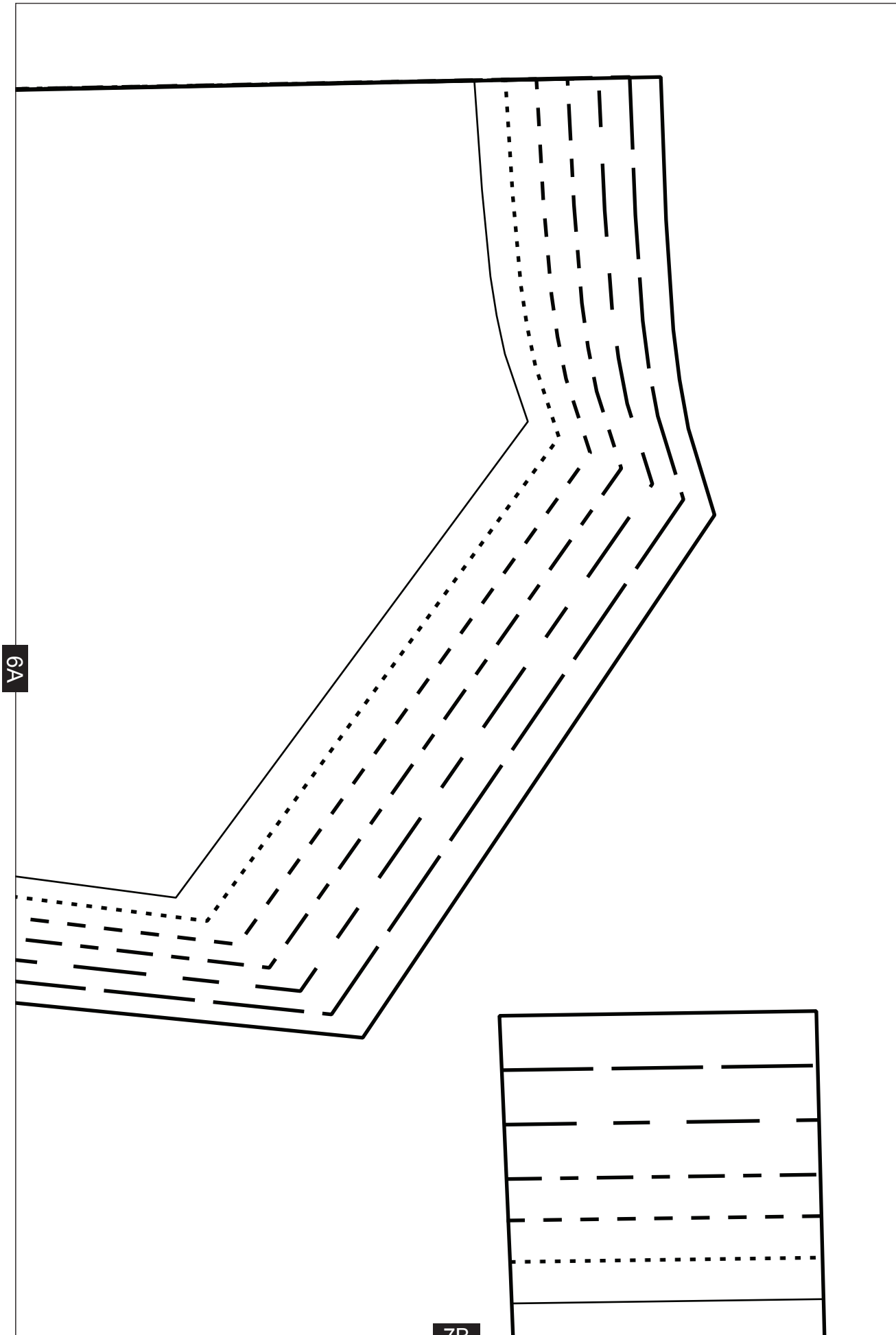
5B



5A

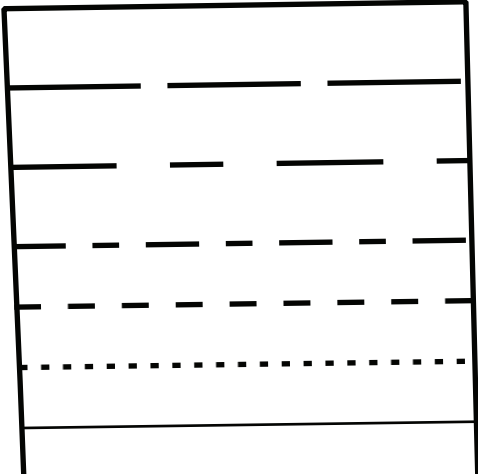
6A

6B

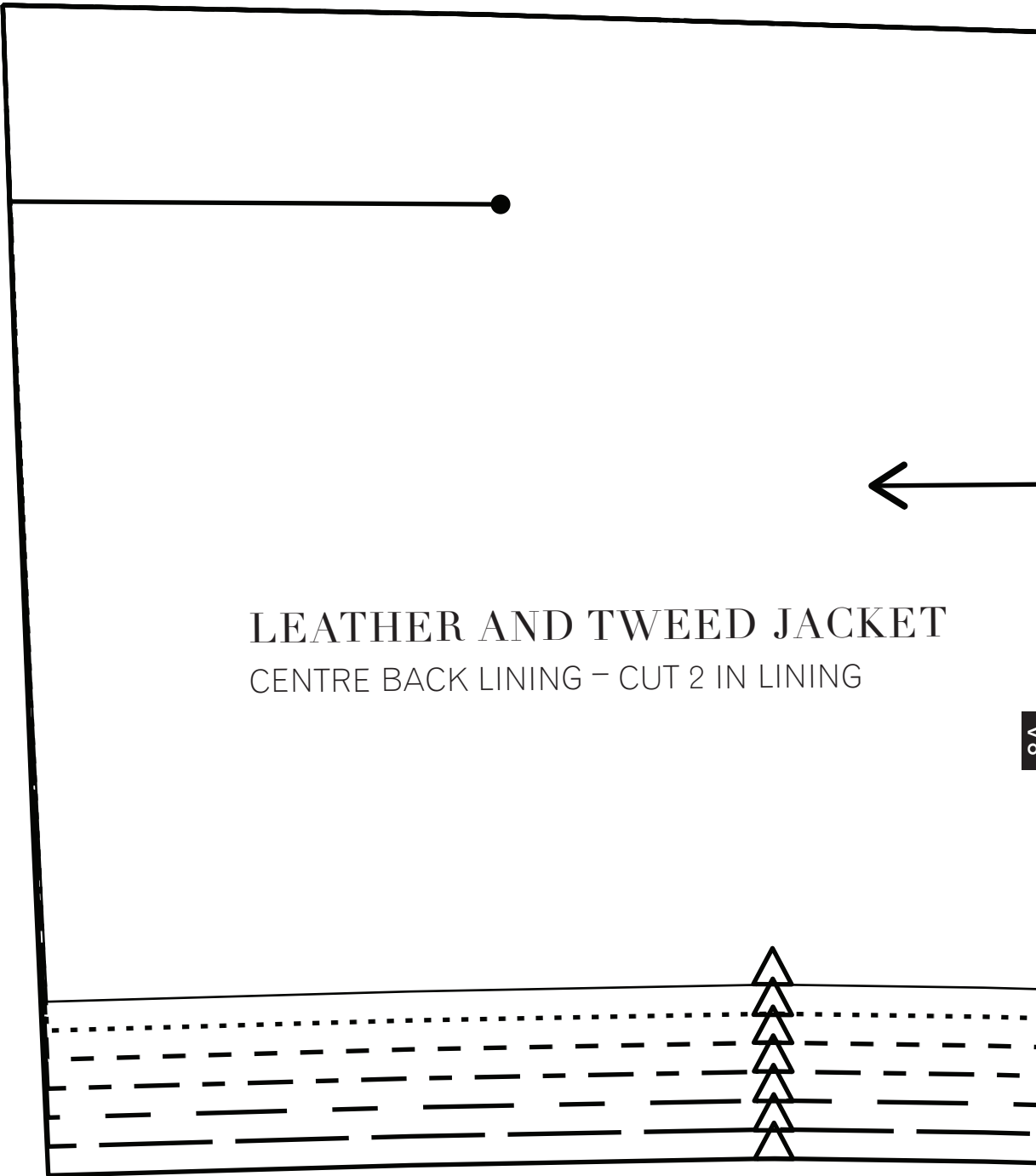


6A

7B



1B



8A

8B



2B



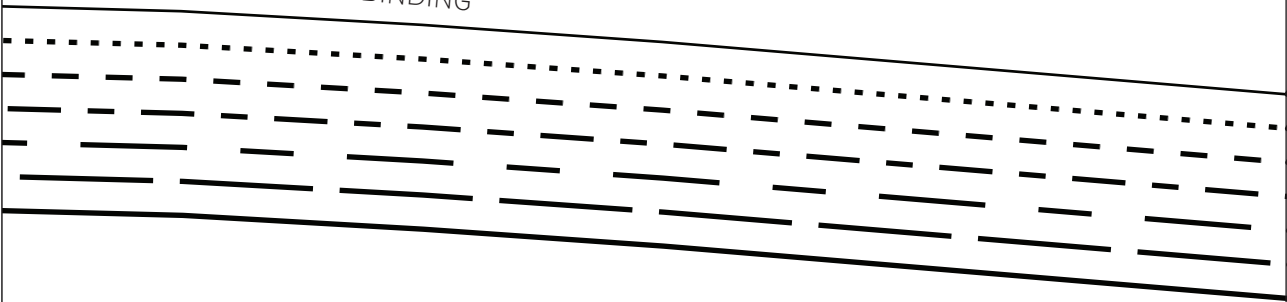
1-CM (3/8-IN) SEAM ALLOWANCE INCLUDED



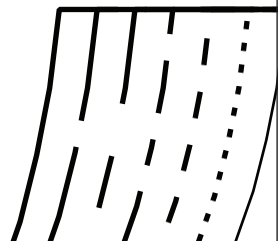
8A

9A

SIDE BINDING



9B



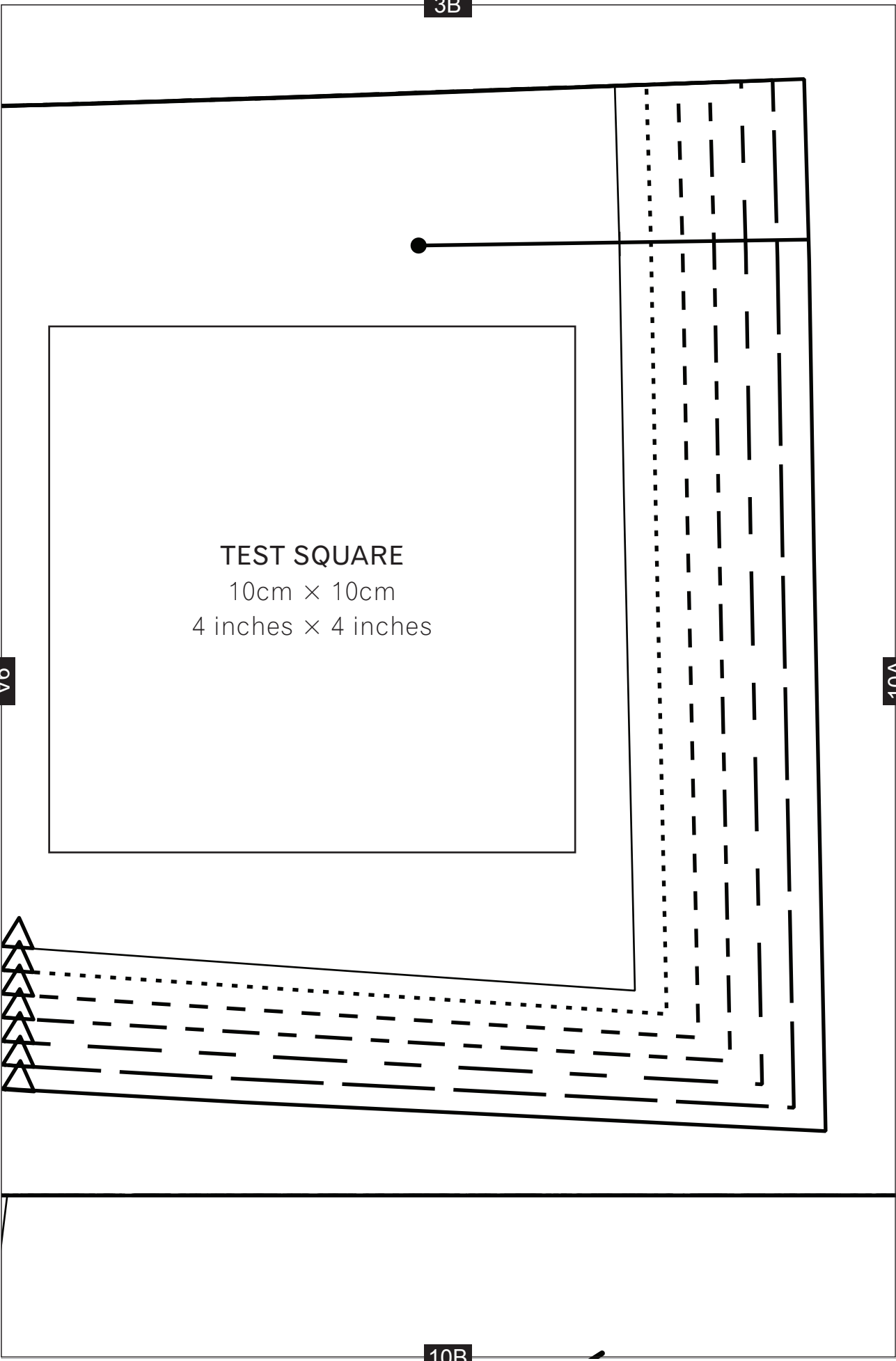
3B

TEST SQUARE  
10cm × 10cm  
4 inches × 4 inches

9A

10A

10B



4B

10A

11A

LEATHER AND TWEED JACKET  
 UNDER SLEEVE -  
 CUT 2 IN LEATHER + CUT 2 IN LINING

CUT LINE FOR LEATHER

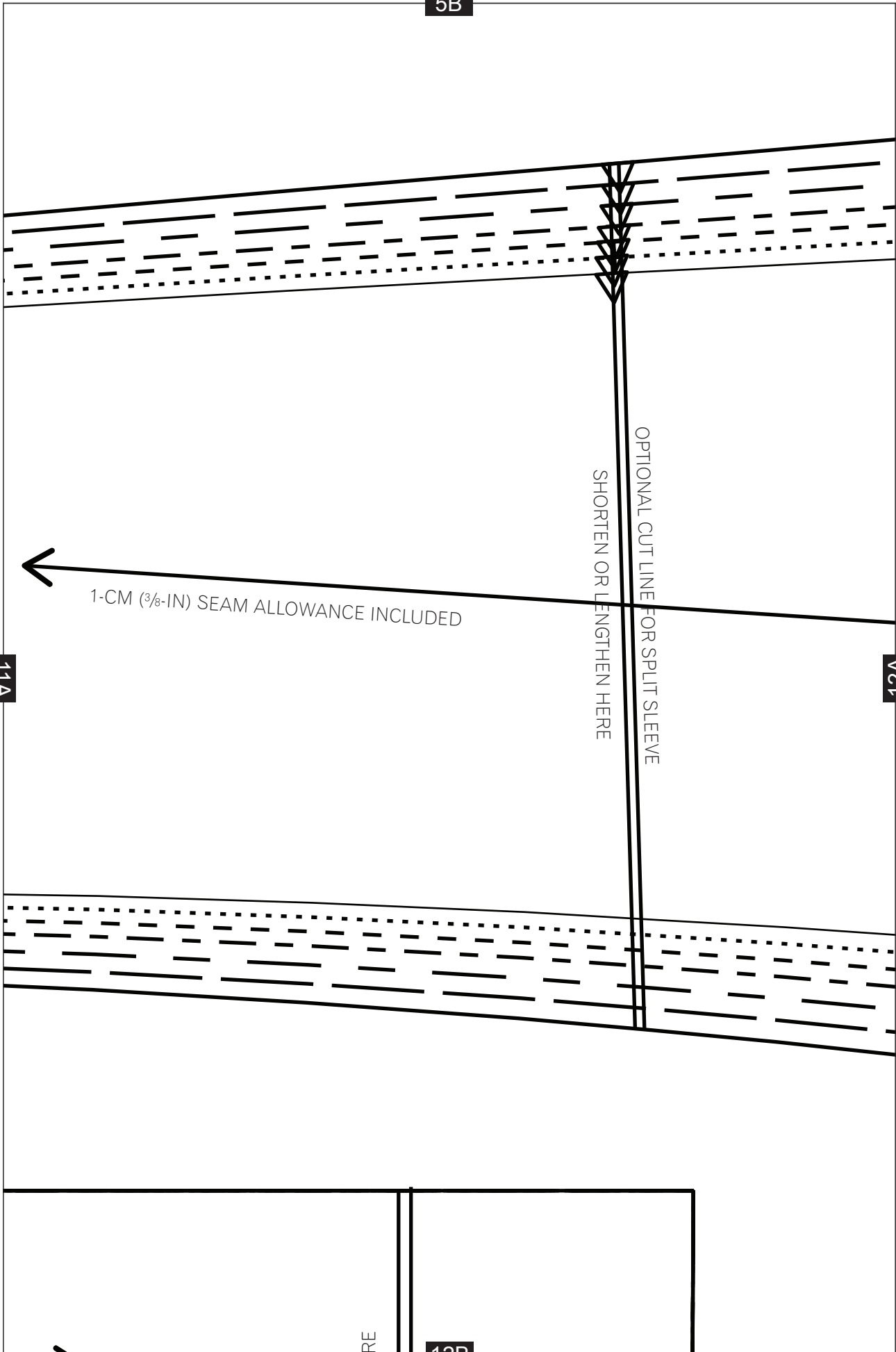
CUT LINE FOR LINING

CENTRE FRONT

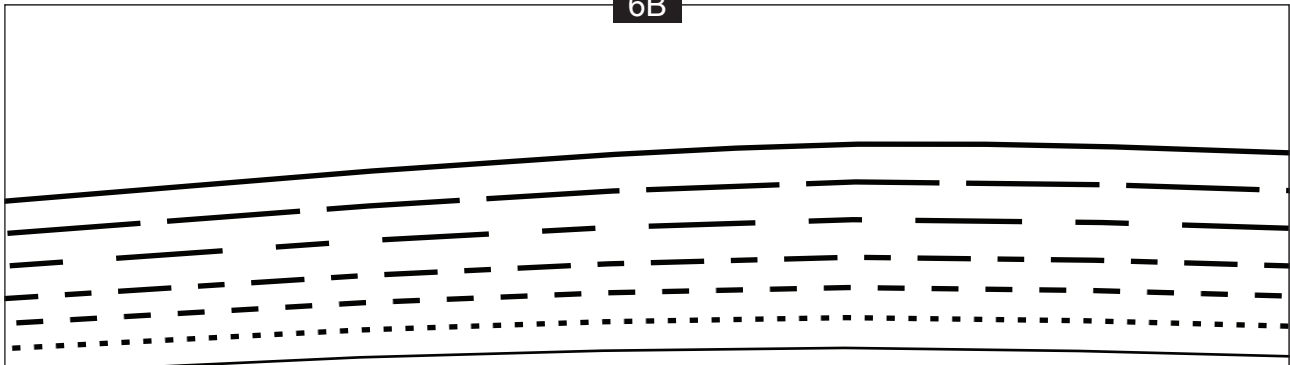
1-CM (3/8-IN) SEAM ALLOWANCE INCLUDED

11B

5B



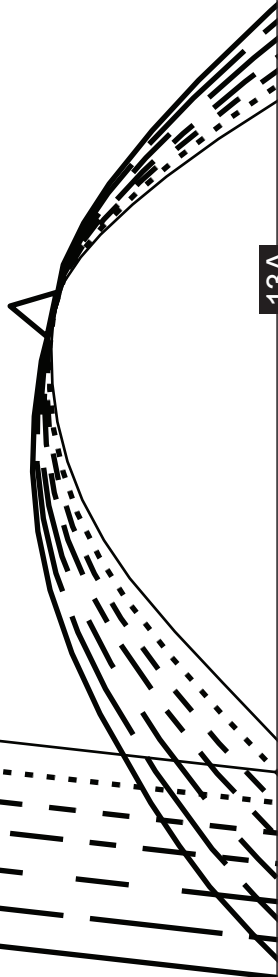
6B



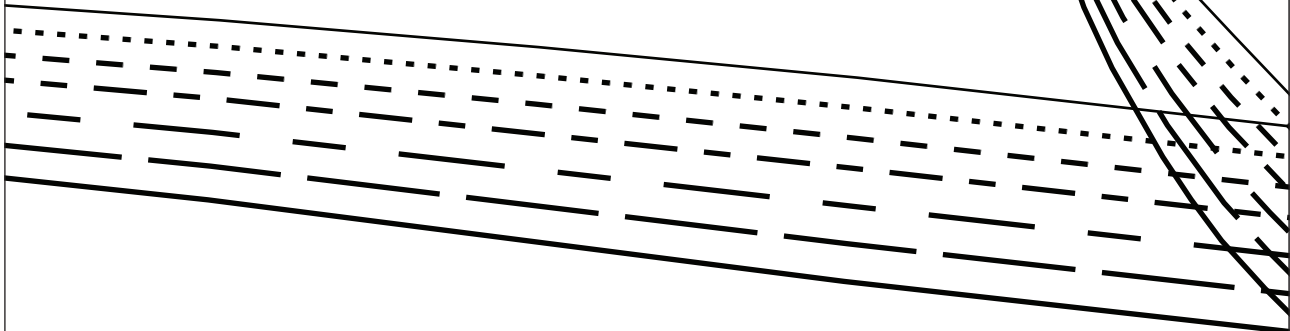
12A



13A



13B



**LEATHER AND TWEED JACKET**  
WAIST FACING – CUT 2 IN LEATHER OR FABRIC  
+ CUT 2 IN INTERFACING

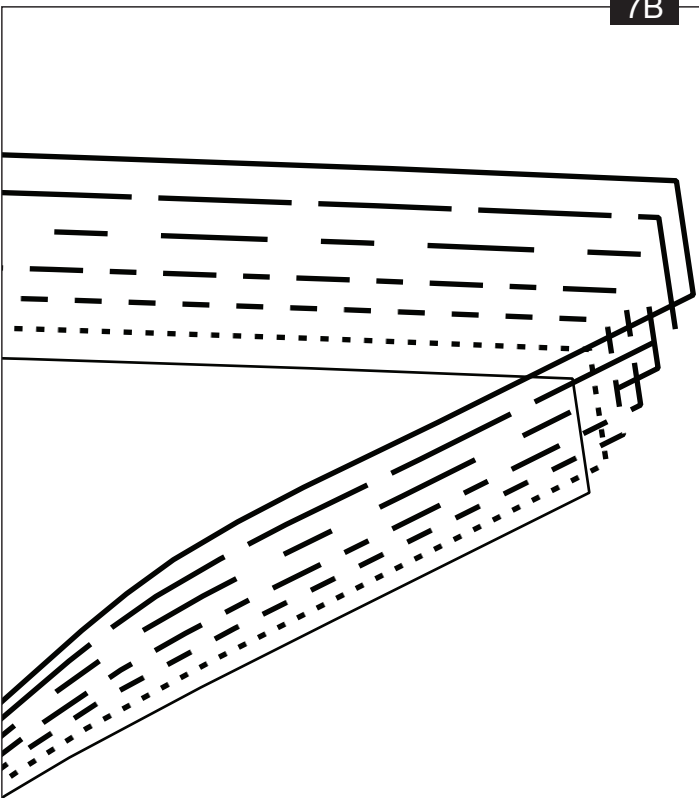
SIDE SEAM

1-CM ( $\frac{3}{8}$ -IN) SEAM  
ALLOWANCE  
INCLUDED

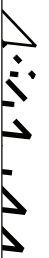


7B

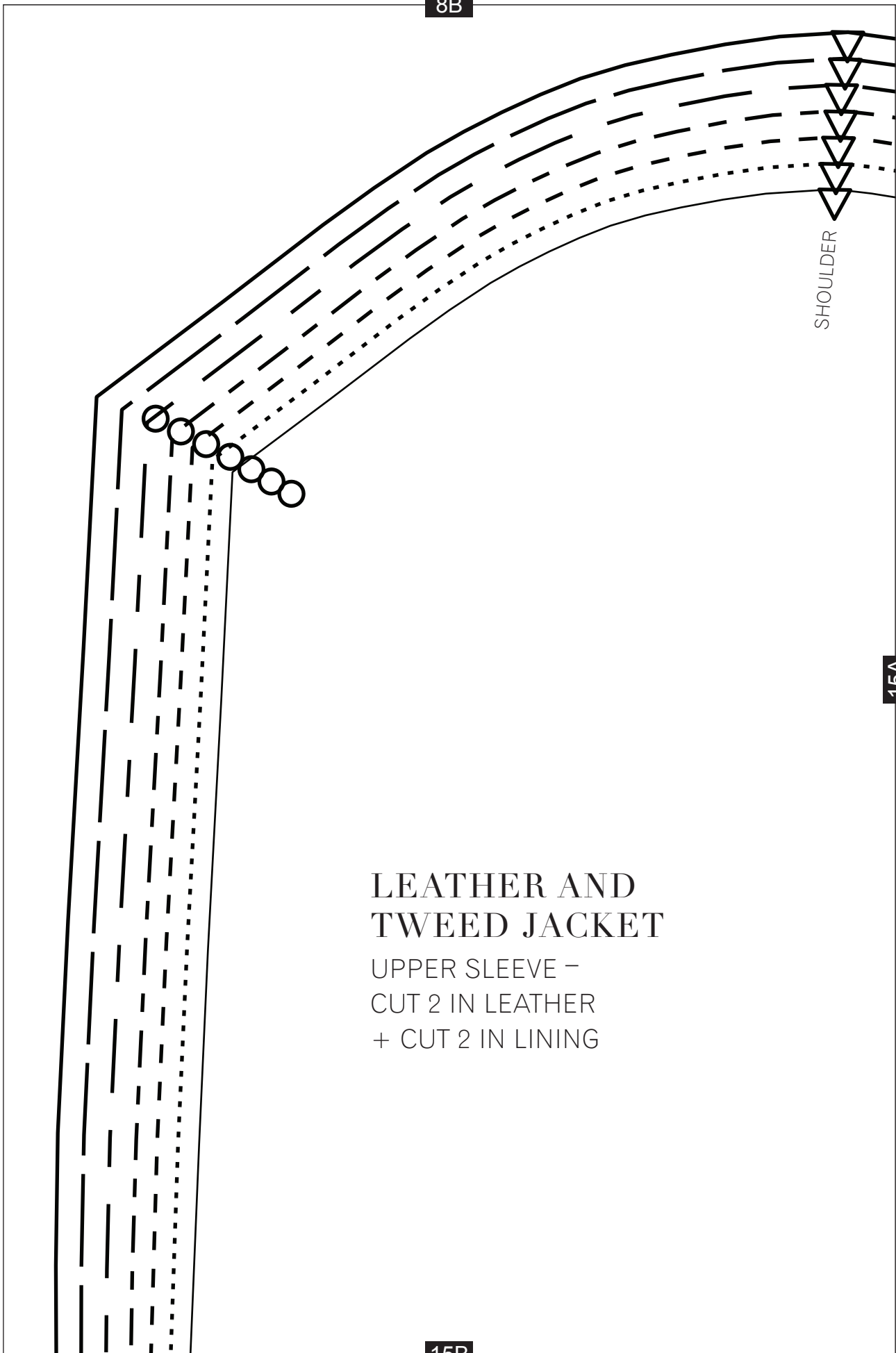
14B



13A



8B



15A

## LEATHER AND TWEED JACKET

UPPER SLEEVE -  
CUT 2 IN LEATHER  
+ CUT 2 IN LINING

15B

9B

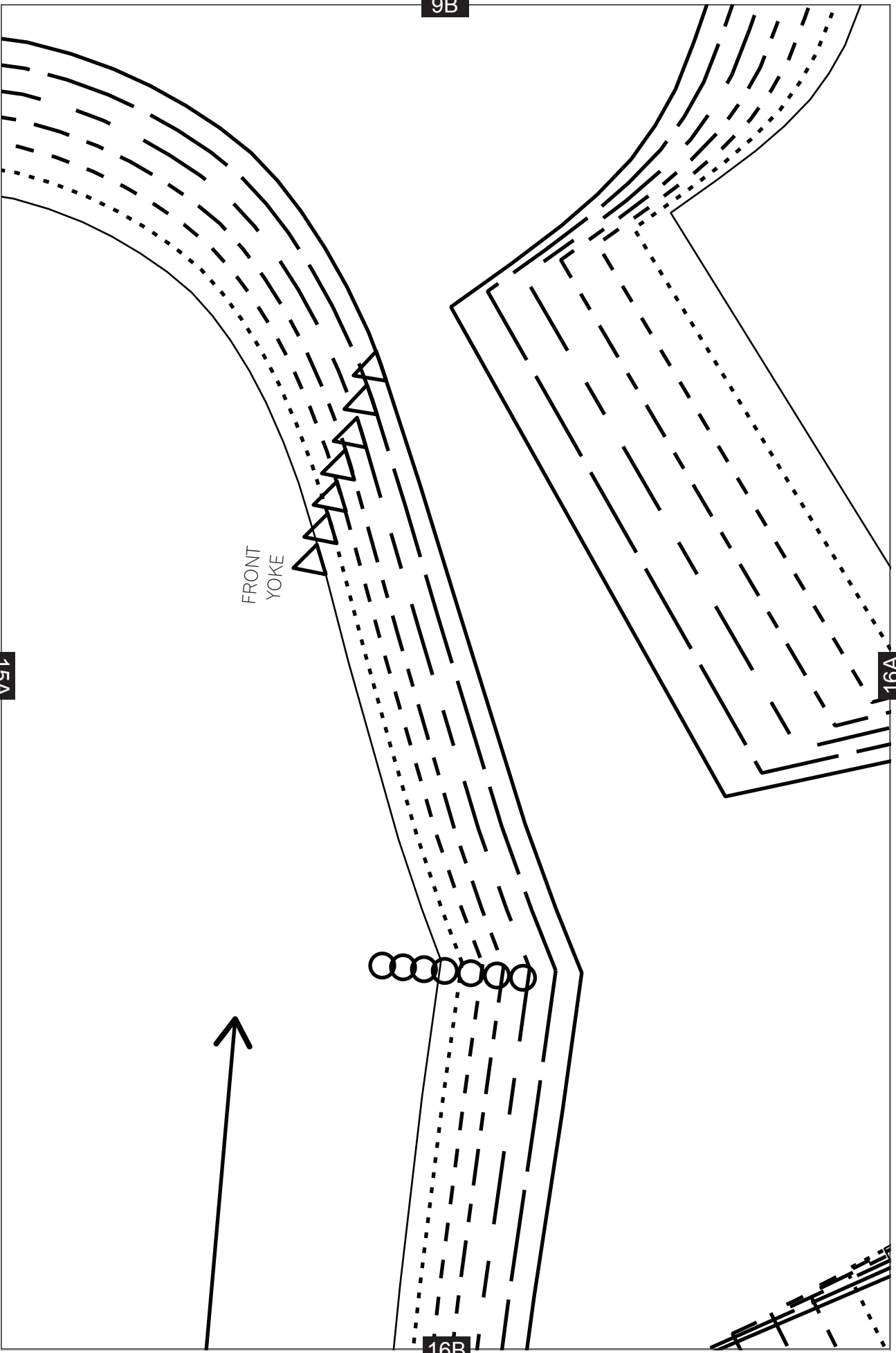
15A

FRONT  
YOKE

16A



16B





10B



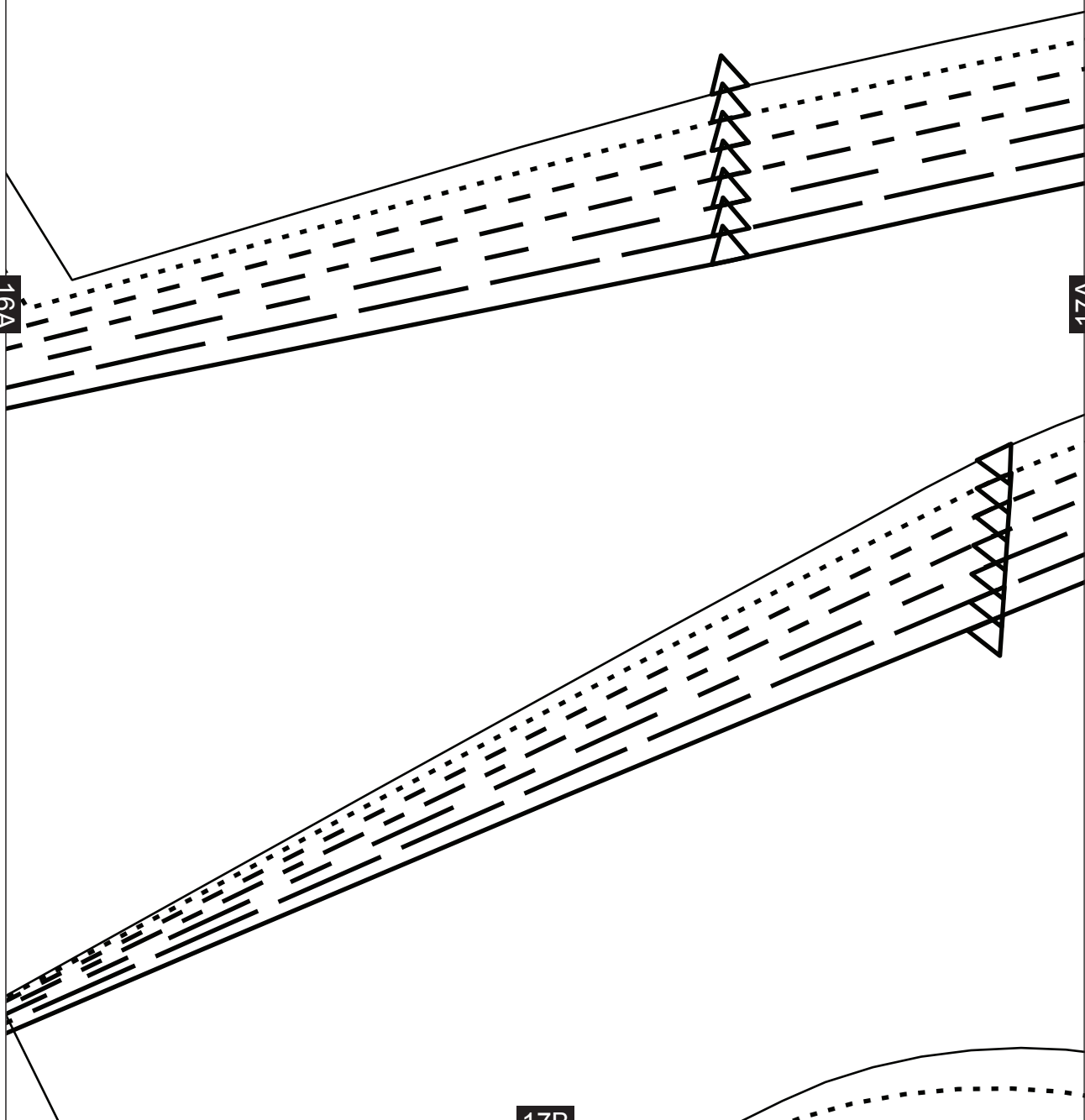
# LEATHER AND TWEED JACKET

FRONT - CUT 2 IN LEATHER OR FABRIC

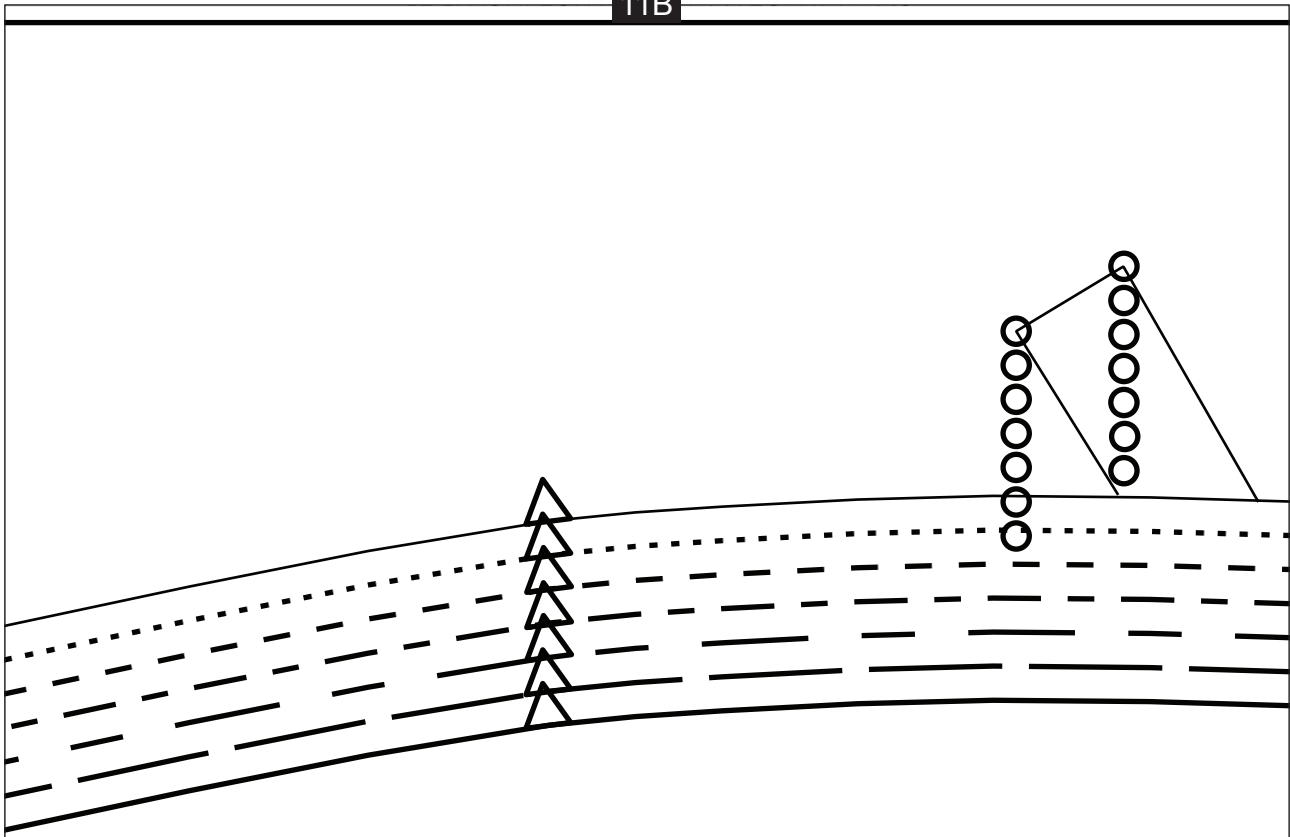
16A

17A

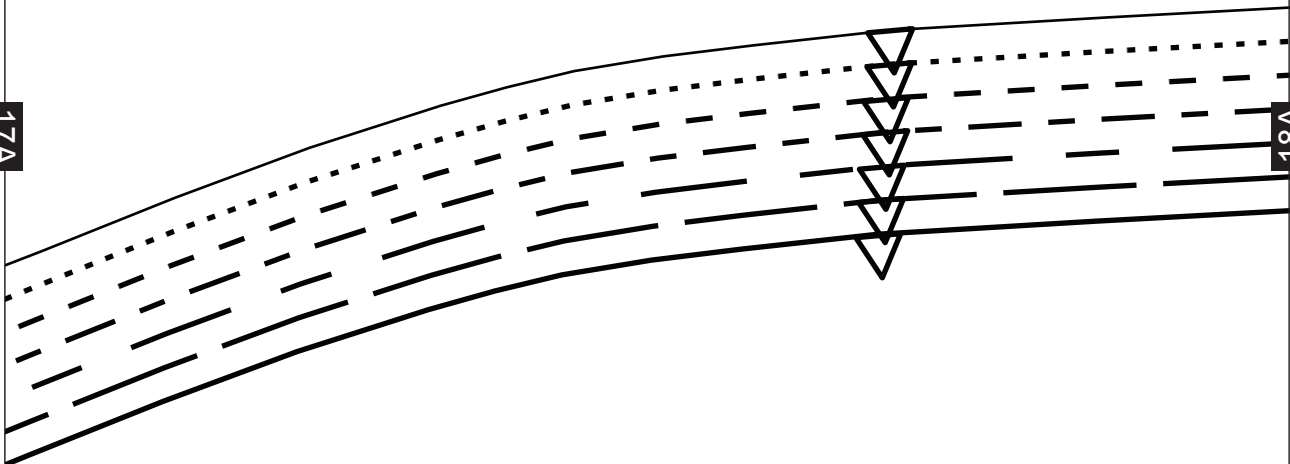
17B



11B



17A



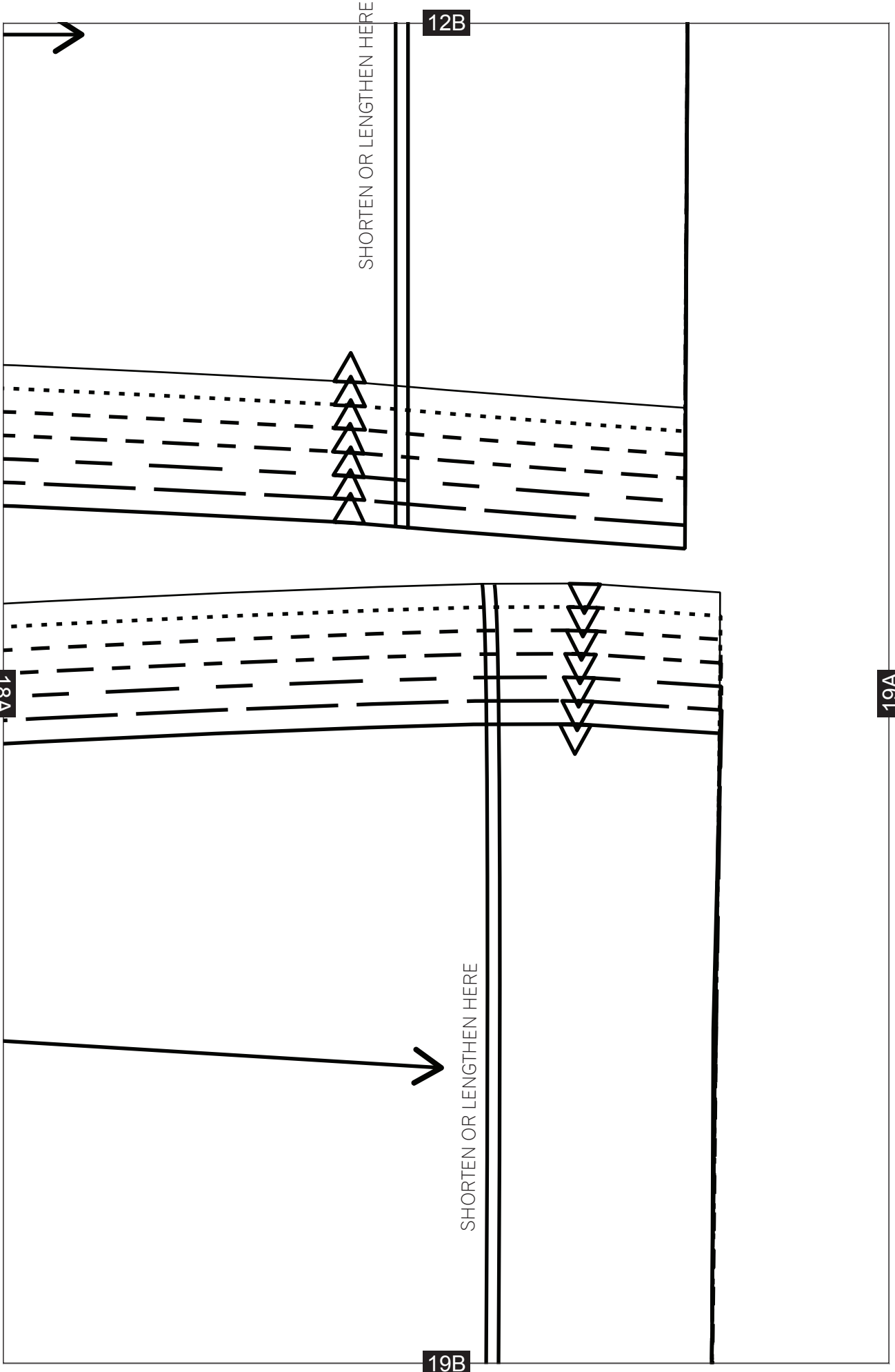
18A

← 1-CM (3/8-IN) SEAM ALLOWANCE INCLUDED

LEATHER AND TWEED JACKET  
SIDE FRONT LINING - CUT 2 IN LINING



18B



13B

SHORTEN OR LENGTHEN HERE

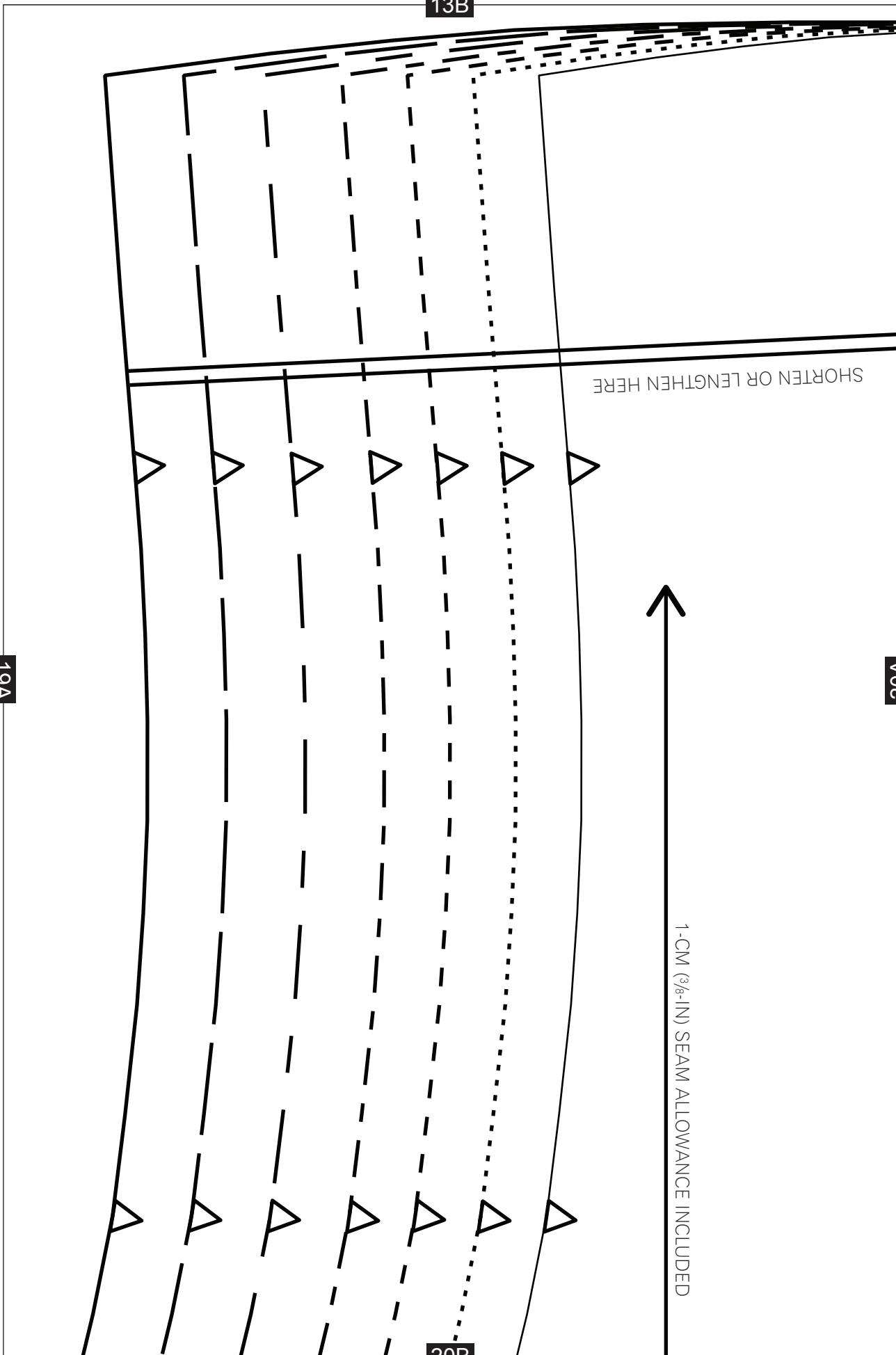
19A

20A

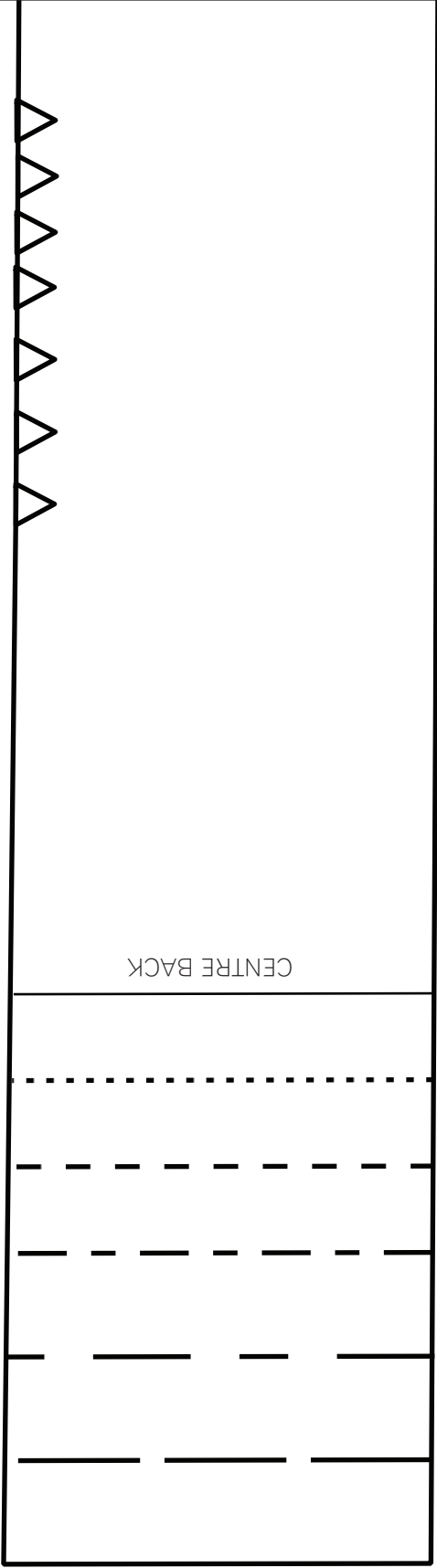


1-CM (3/8-IN) SEAM ALLOWANCE INCLUDED

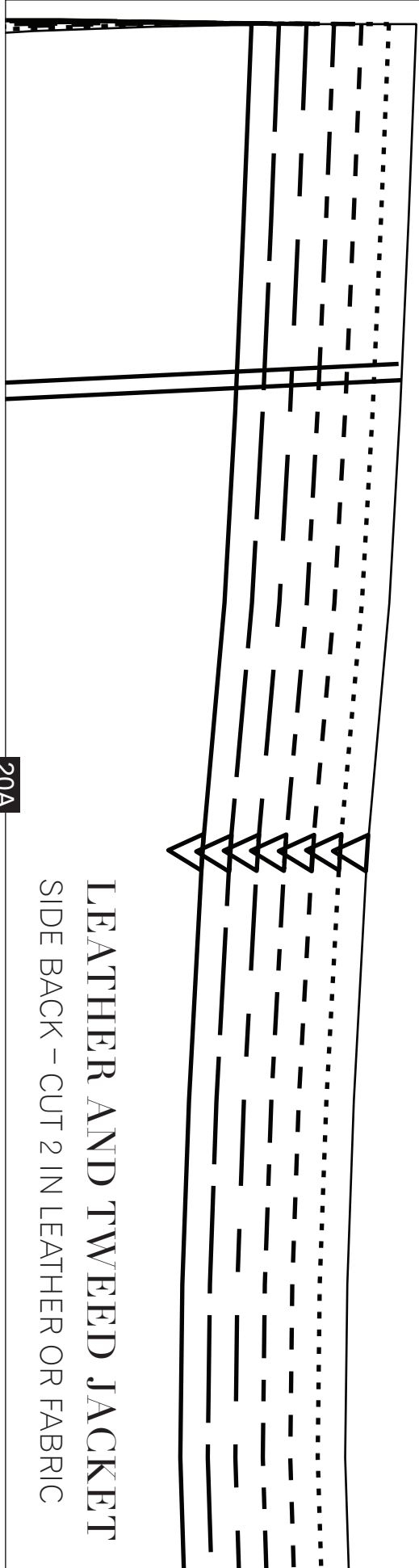
20B



14B



21B



20A

**LEATHER AND TWEED JACKET**  
 SIDE BACK – CUT 2 IN LEATHER OR FABRIC

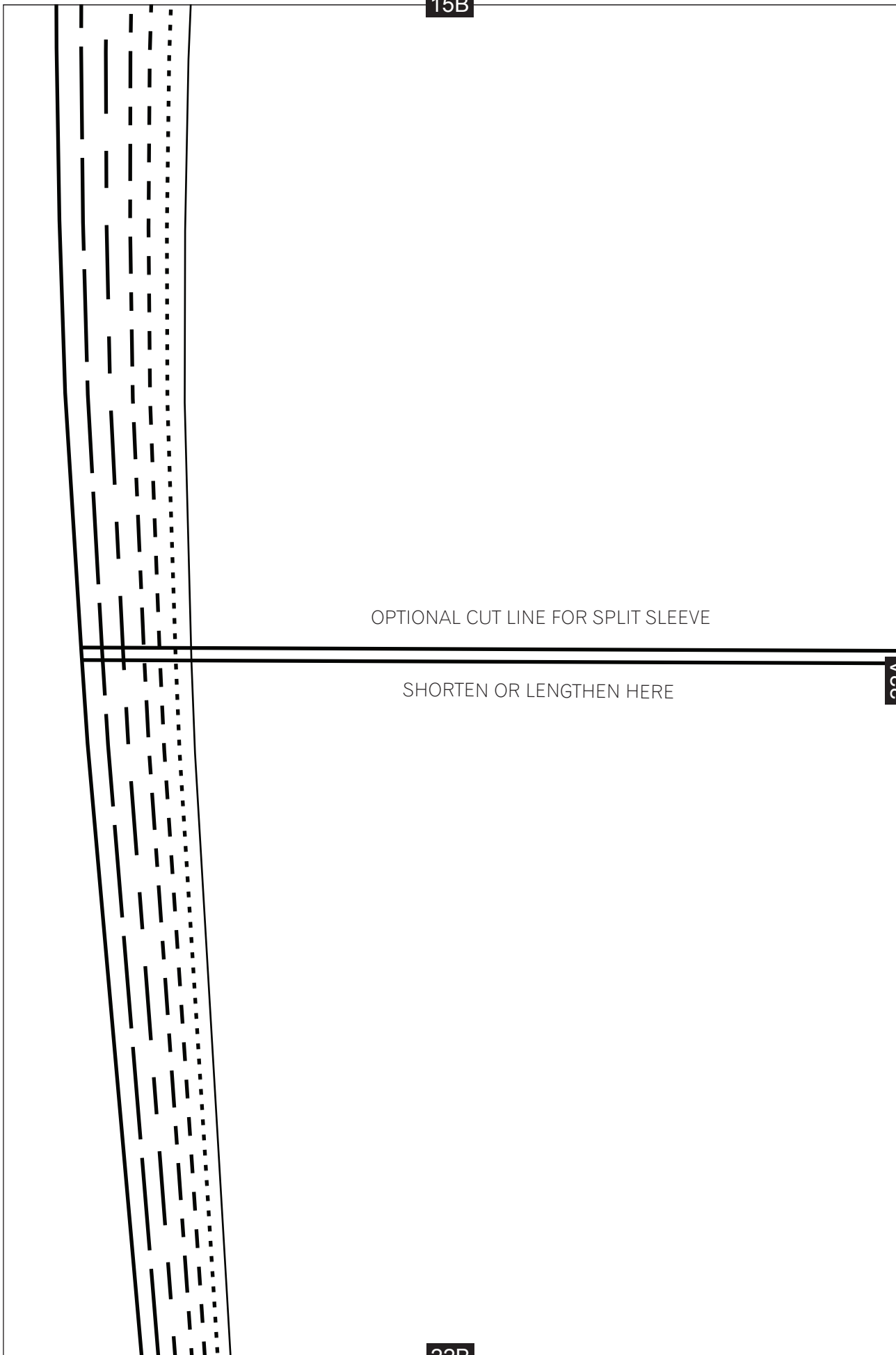
15B

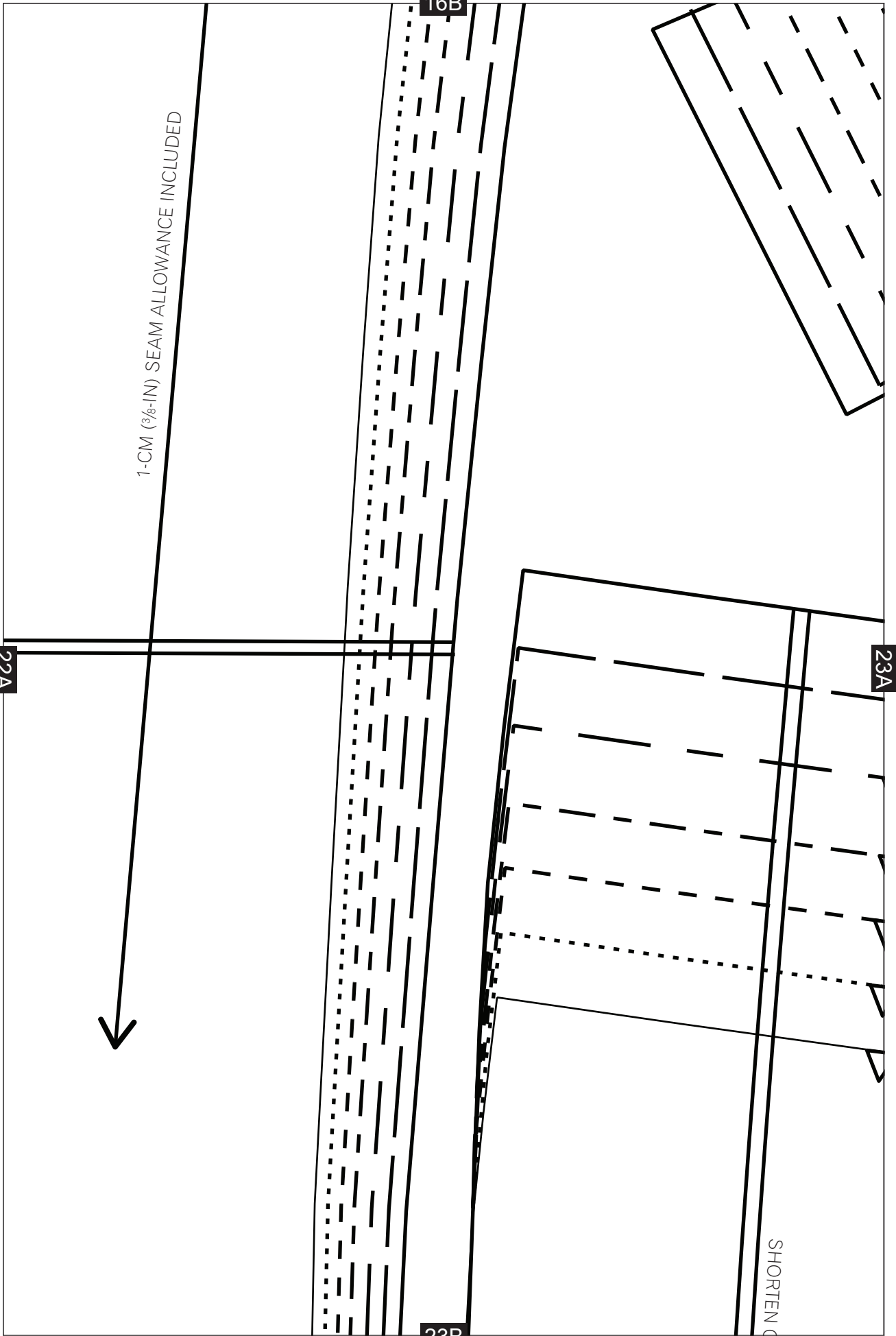
OPTIONAL CUT LINE FOR SPLIT SLEEVE

SHORTEN OR LENGTHEN HERE

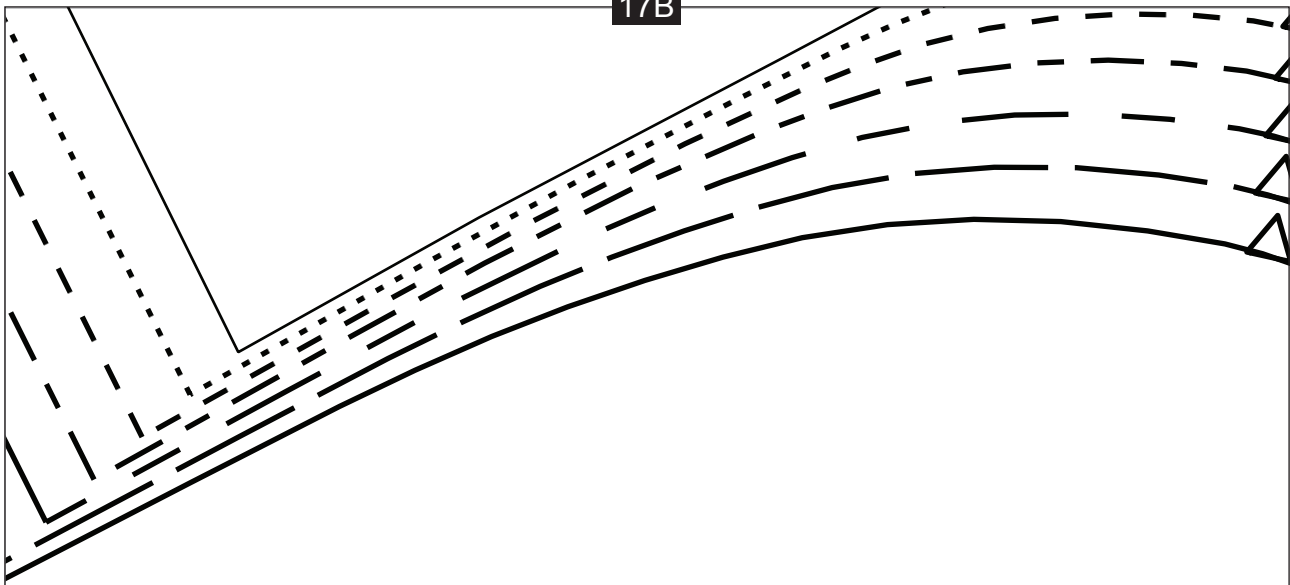
22A

22B



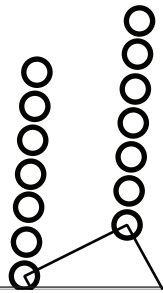
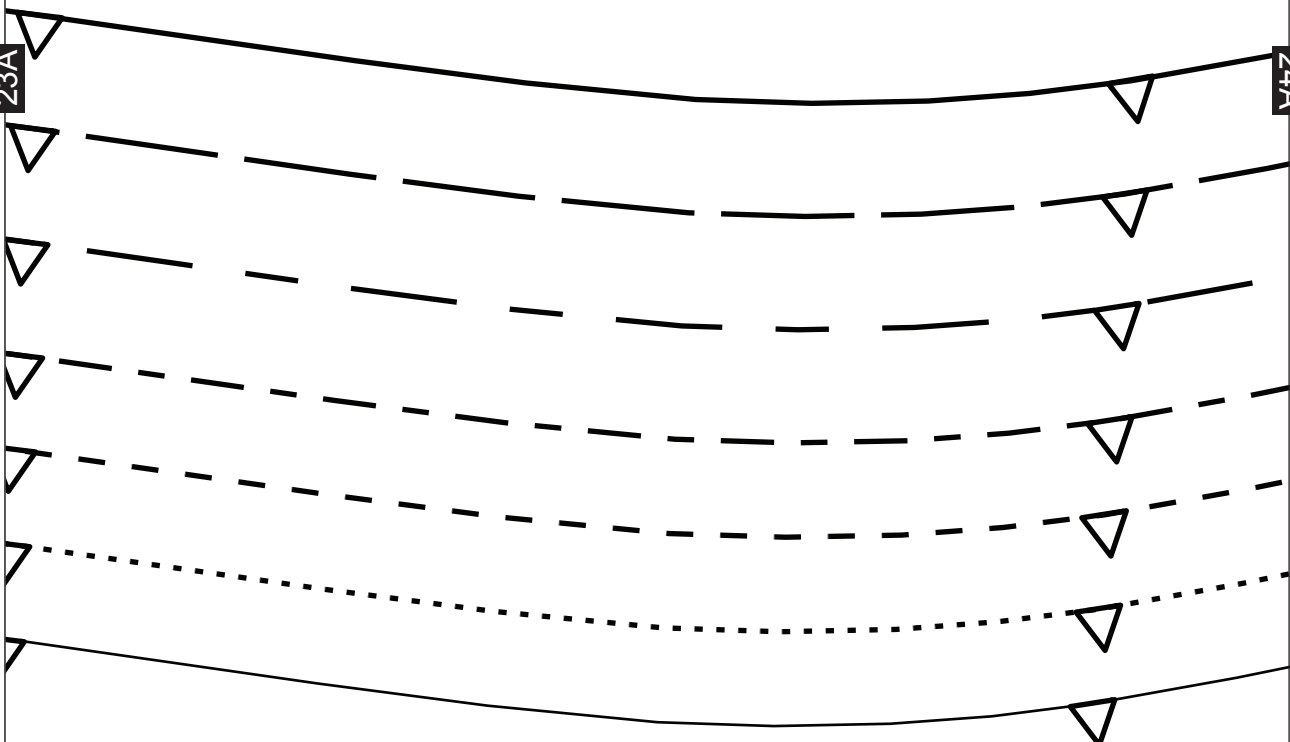


17B



23A

24A

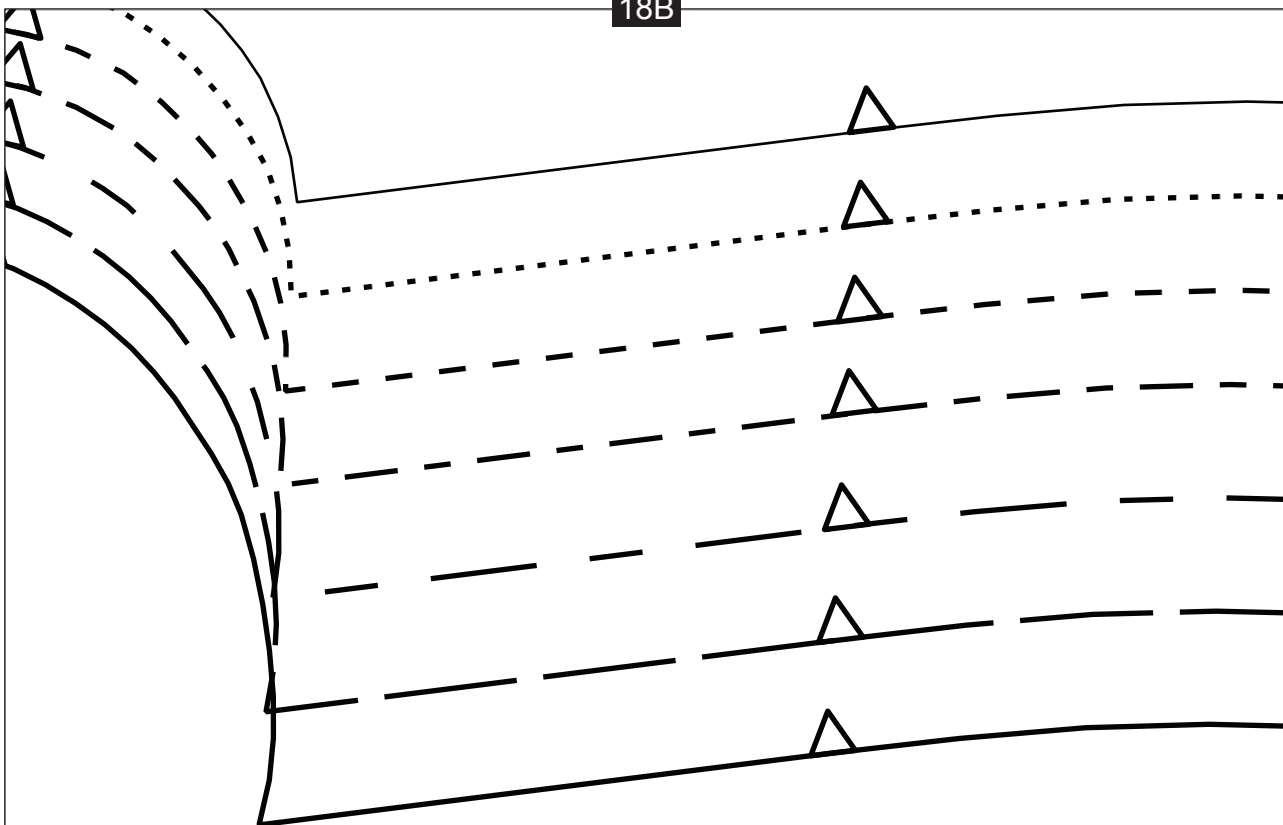


24B

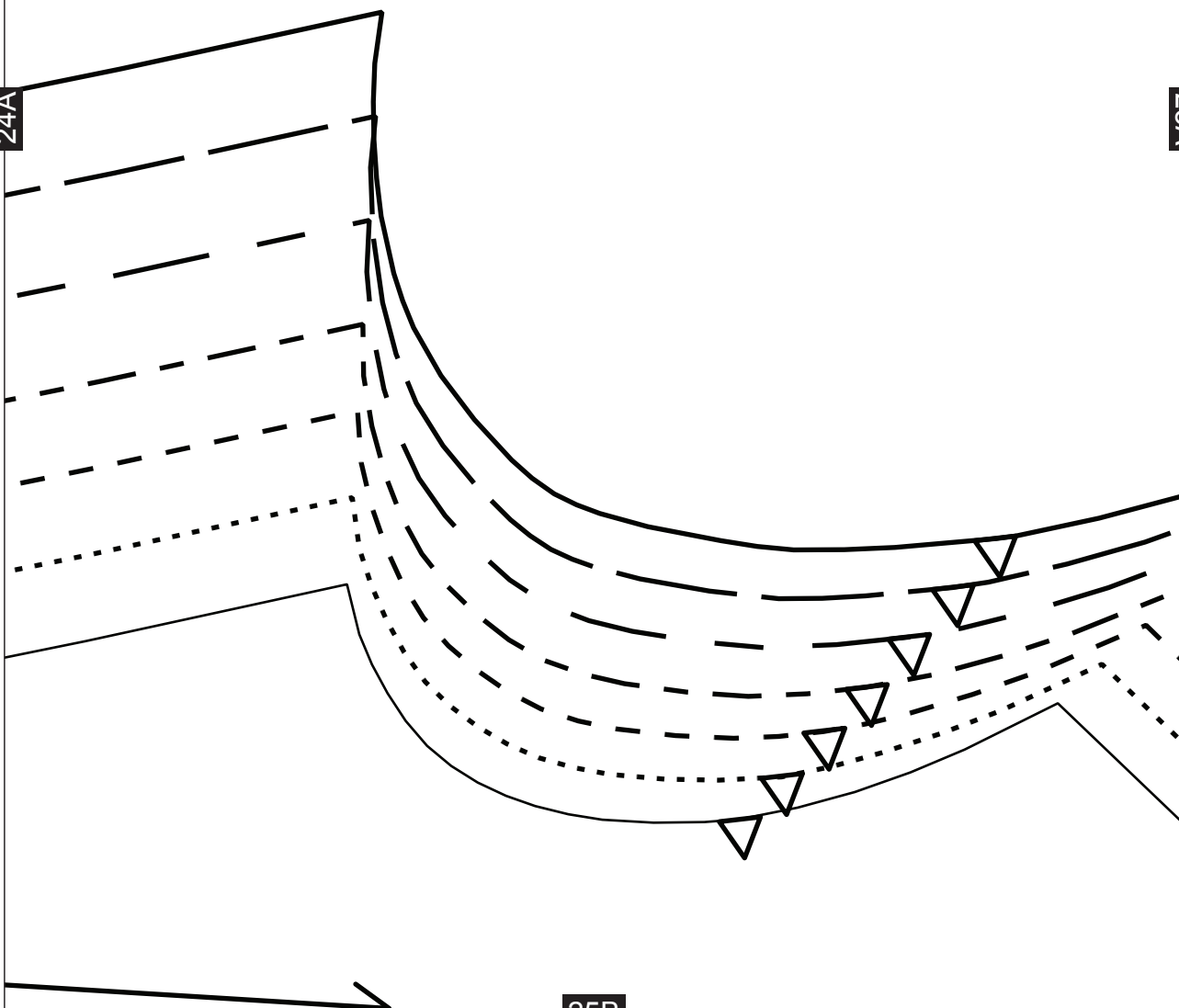
← 1-CM (3/8-IN) SEAM ALLOWANCE INCLUDED



18B



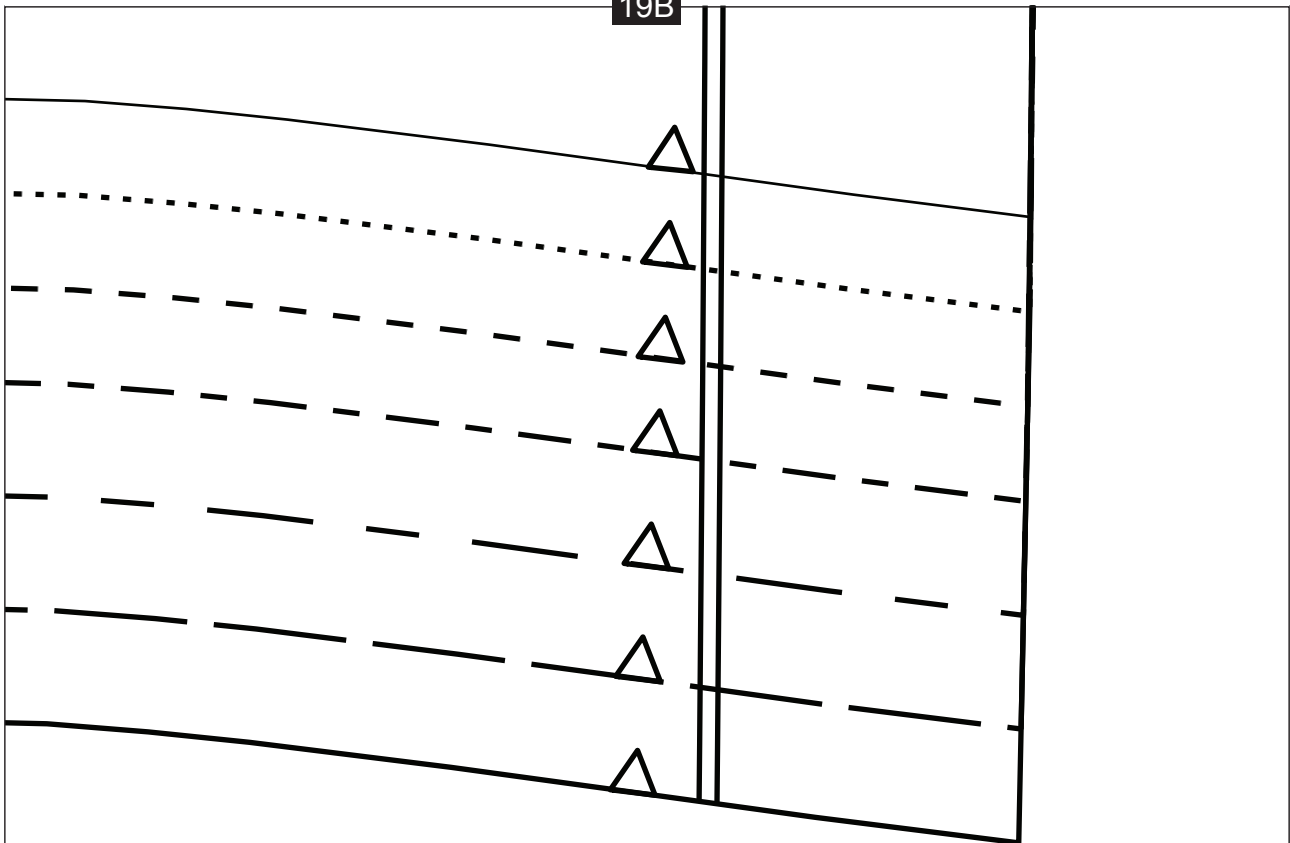
24A



25A

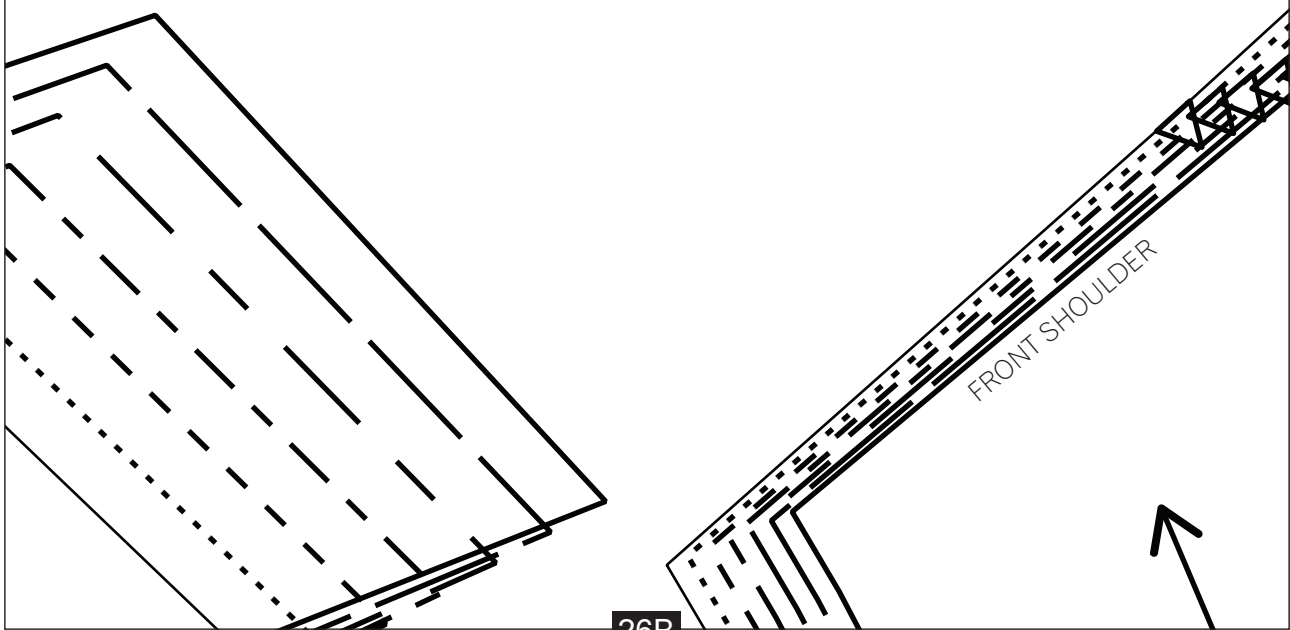
25B

19B



25A

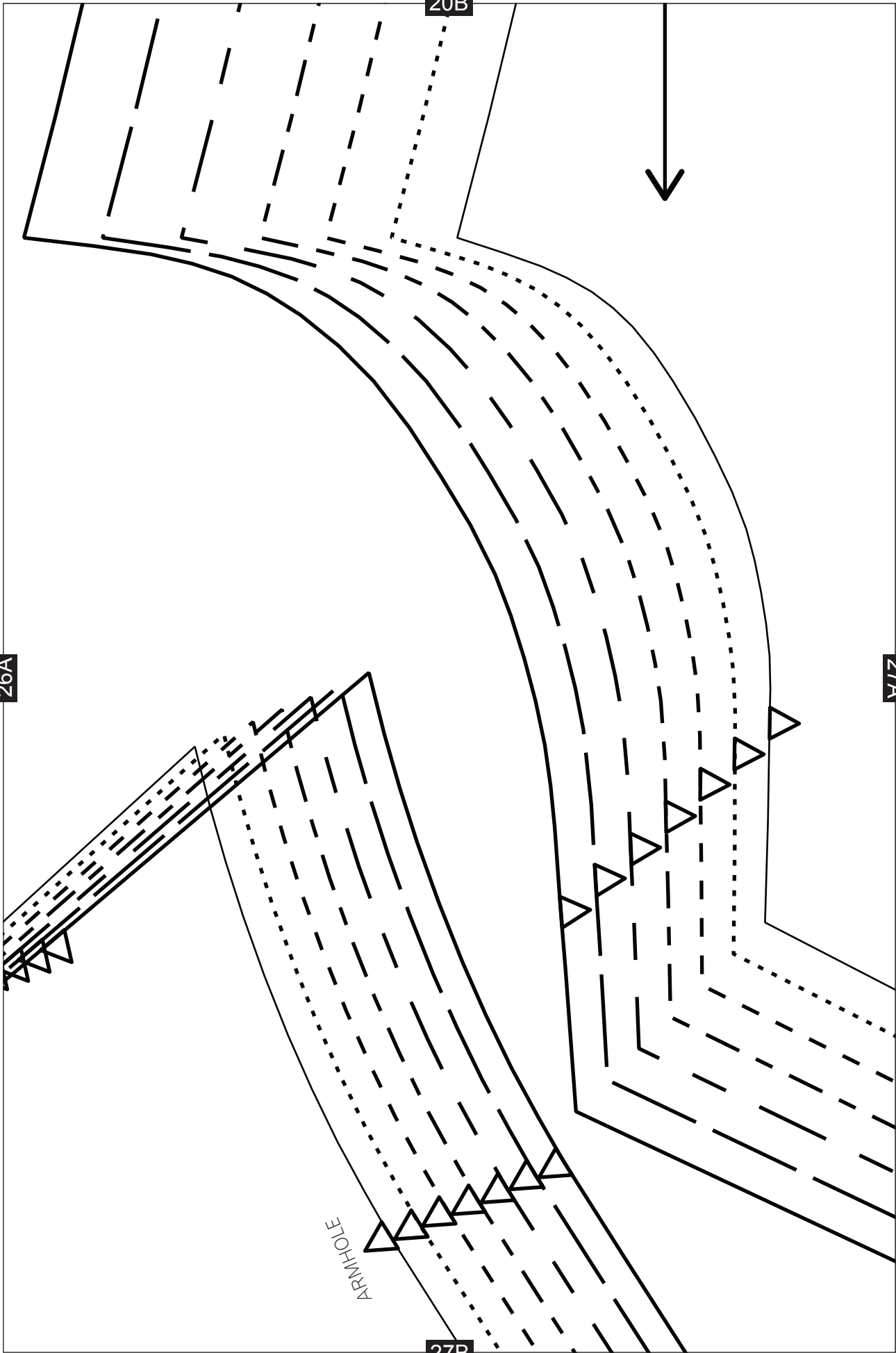
26A



26B

FRONT SHOULDER





20B

26A

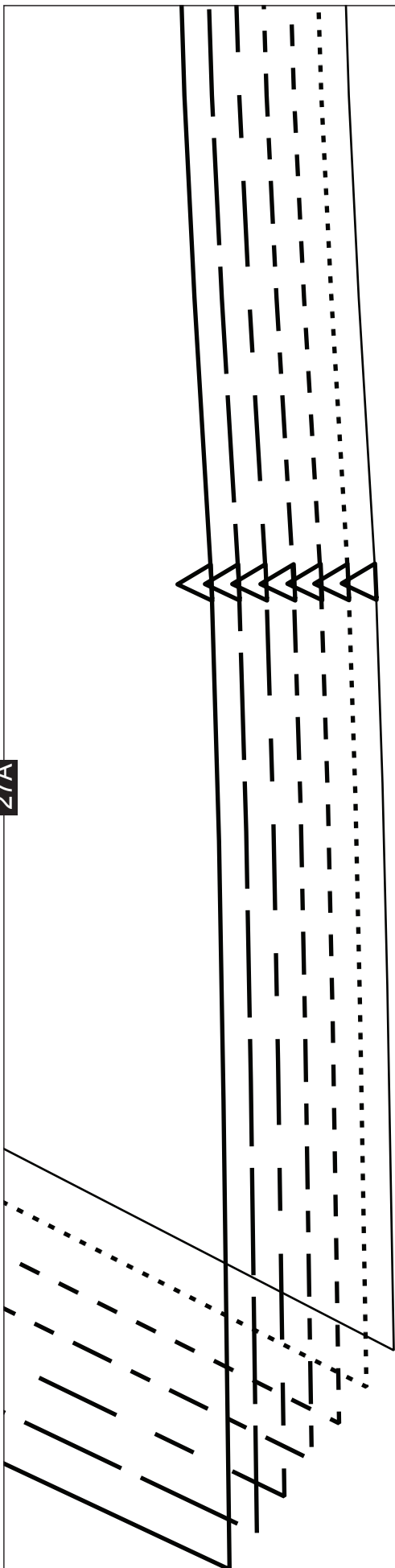
27A

ARMHOLE

27B

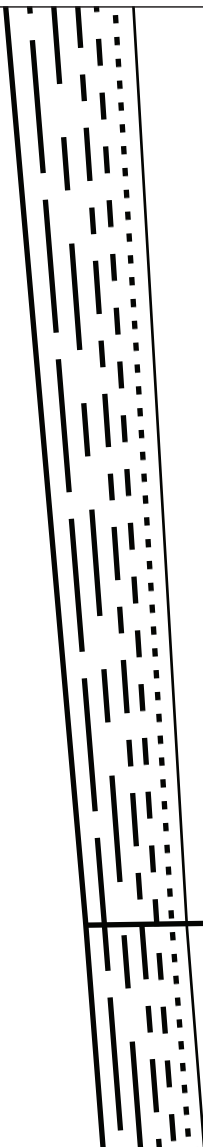
21B

27A



28B

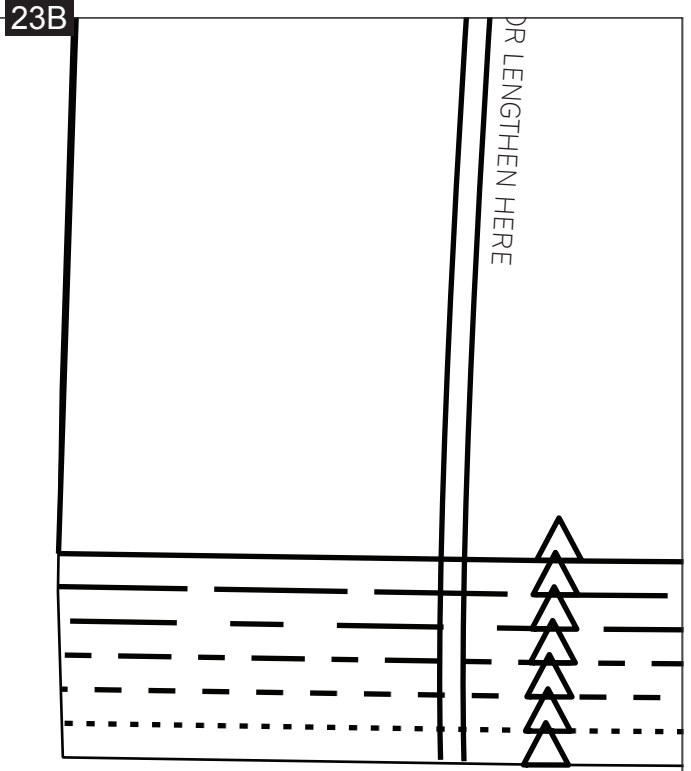
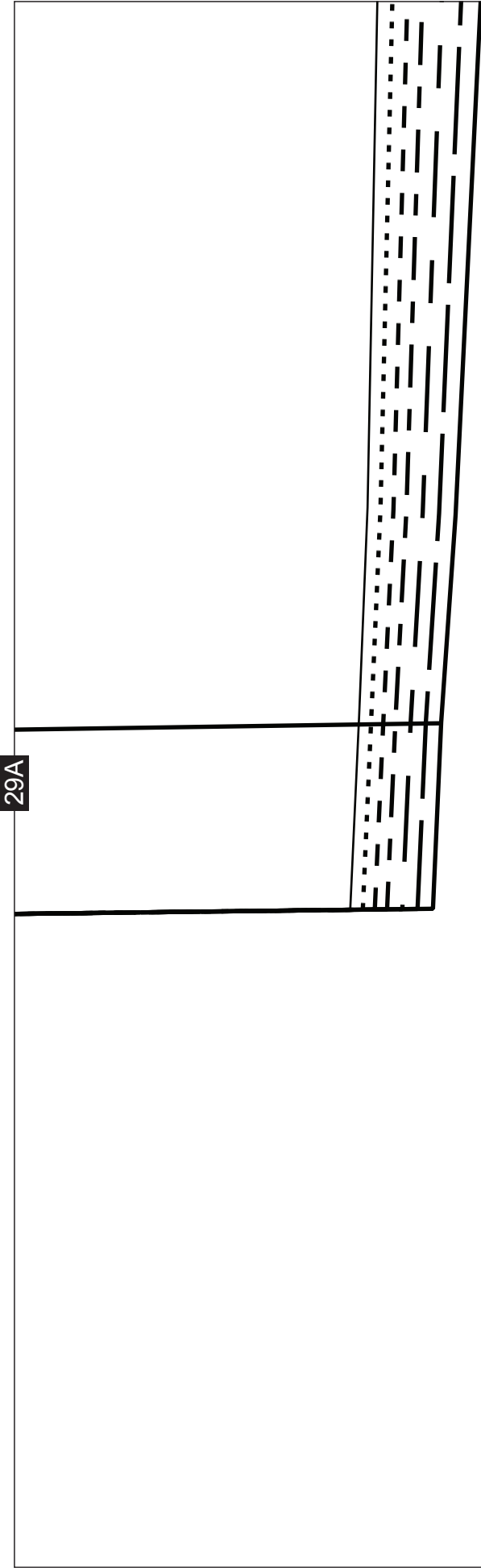
22B



CUT LINE FOR LINING

29A

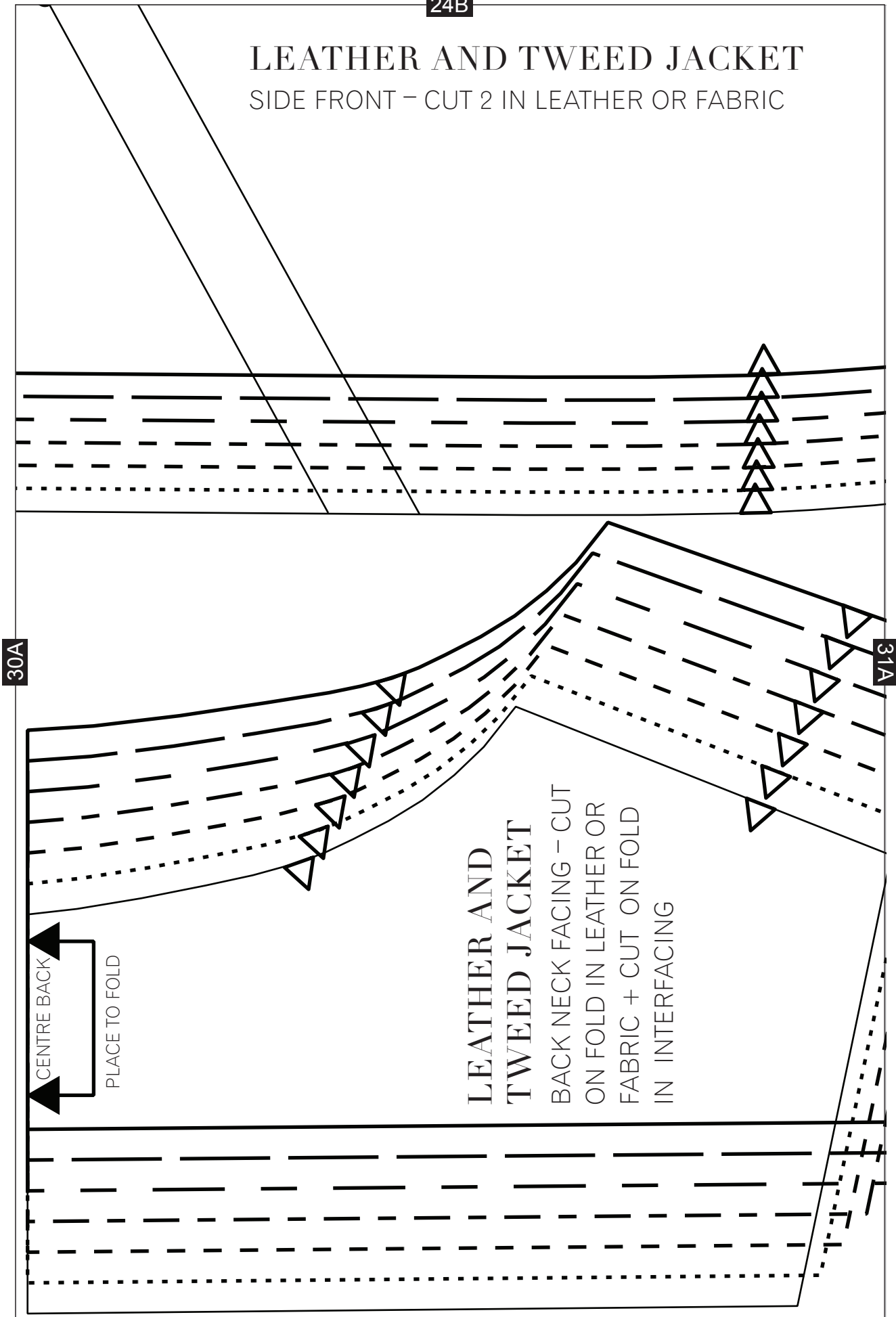
CUT LINE FOR LEATHER



30A

# LEATHER AND TWEED JACKET

SIDE FRONT - CUT 2 IN LEATHER OR FABRIC



30A

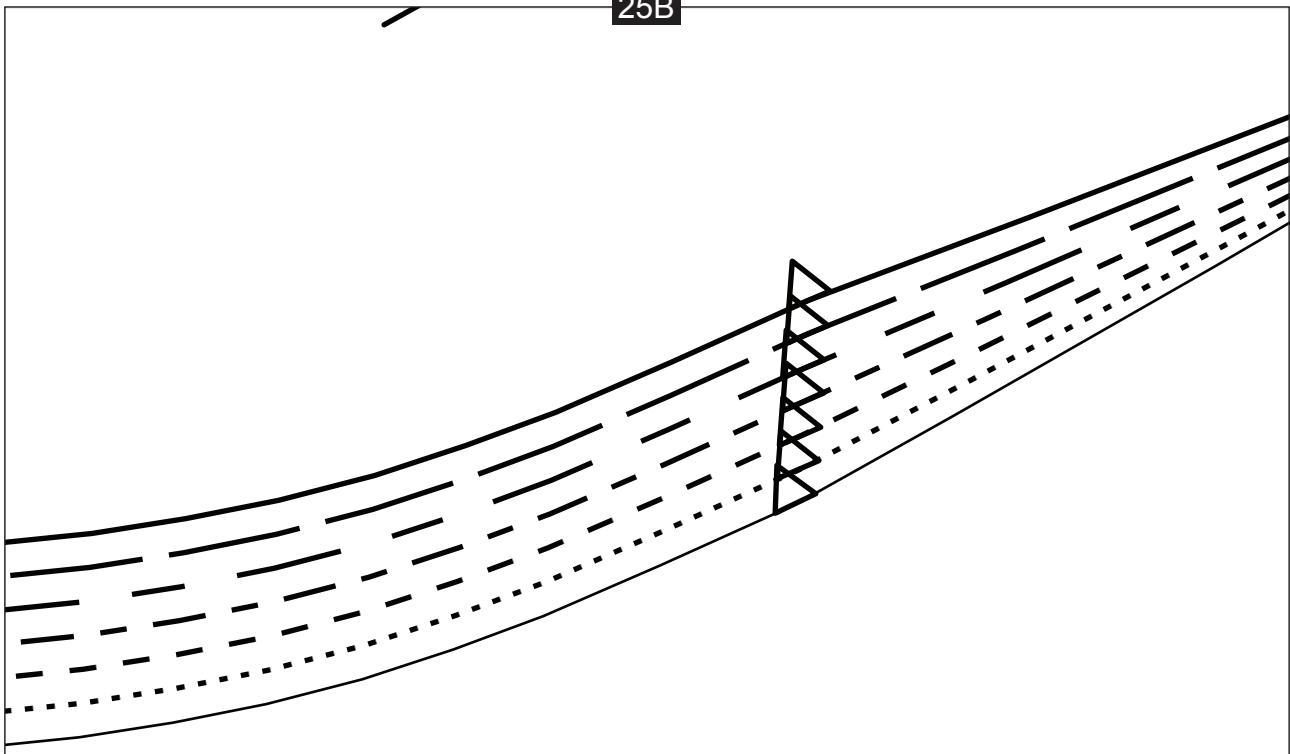
31A

CENTRE BACK  
PLACE TO FOLD

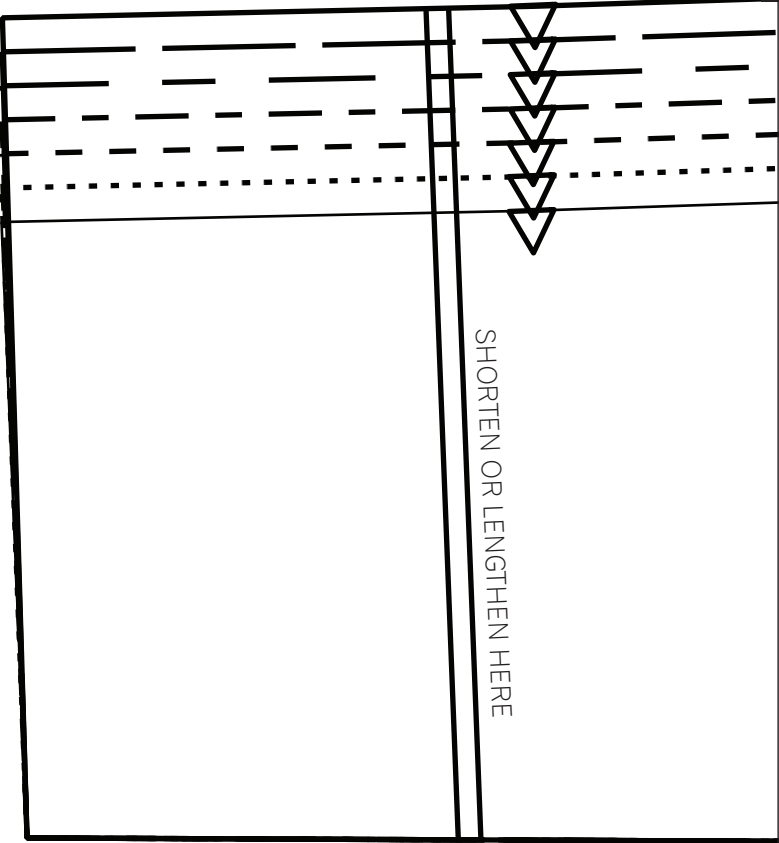
## LEATHER AND TWEED JACKET

BACK NECK FACING - CUT ON FOLD IN LEATHER OR FABRIC + CUT ON FOLD IN INTERFACING

25B

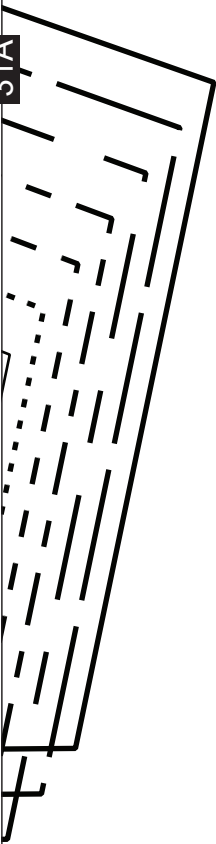


32A



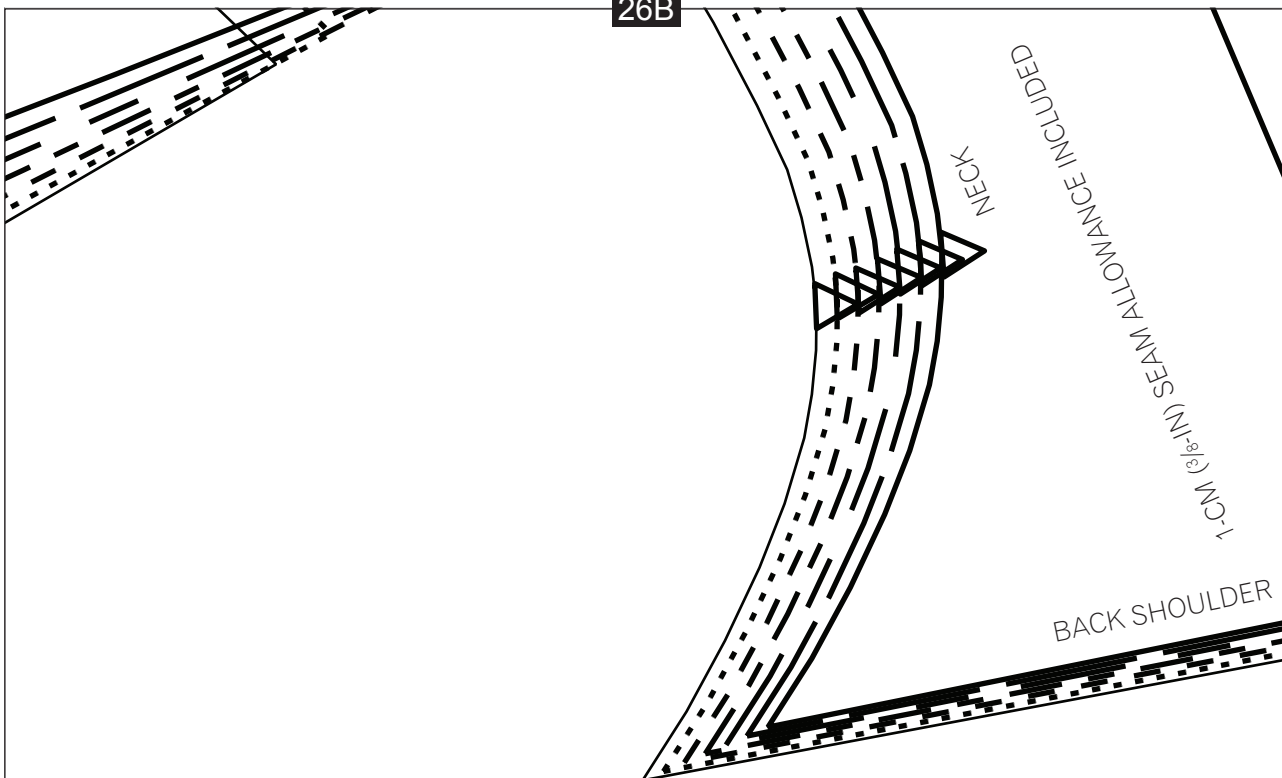
SHORTEN OR LENGTHEN HERE

31A



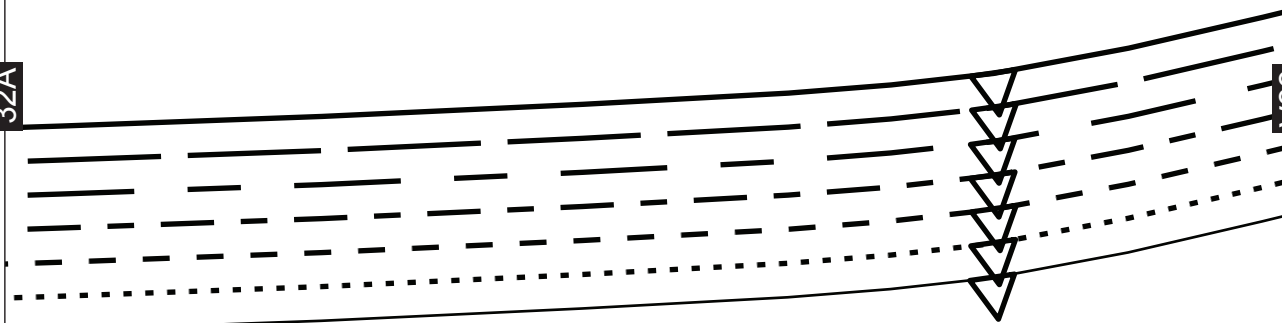


26B



32A

33A

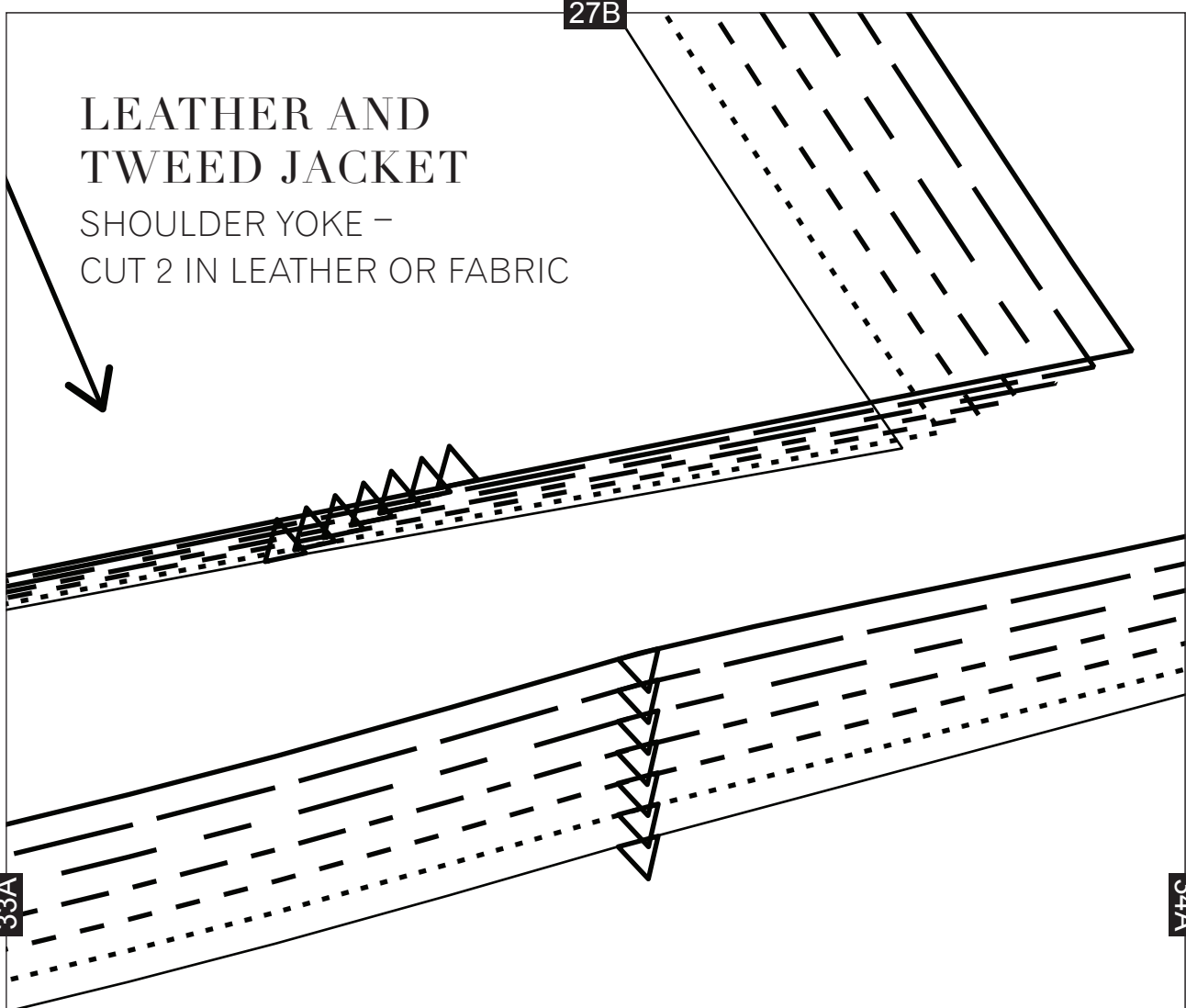


1-CM (3/8-IN SEAM ALLOWANCE INCLUDED

27B

# LEATHER AND TWEED JACKET

SHOULDER YOKE –  
CUT 2 IN LEATHER OR FABRIC

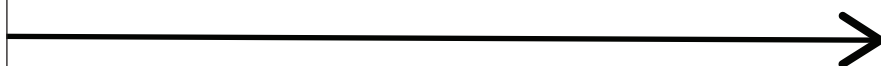


33A

34A

# LEATHER AND TWEED JACKET

FRONT FACING – CUT 2 IN LEATHER OR FABRIC  
+ CUT 2 IN INTERFACING



28B

34A

